

Article

Spinning Cellulose Hollow Fibers Using 1-Ethyl-3-methylimidazolium Acetate–Dimethylsulfoxide Co-Solvent

Linfeng Lei ¹, Arne Lindbråthen ¹, Marius Sandru ², Maria Teresa Guzman Gutierrez ¹, Xiangping Zhang ³, Magne Hillestad ¹ and Xuezhong He ^{1,*} 

¹ Department of Chemical Engineering, Norwegian University of Science and Technology, NO-7491 Trondheim, Norway; linfeng.lei@ntnu.no (L.L.); arne.lindbrathen@ntnu.no (A.L.); maria.t.g.gutierrez@ntnu.no (M.T.G.G.); magne.hillestad@ntnu.no (M.H.)

² SINTEF Industry, SINTEF AS, NO-7465 Trondheim, Norway; marius.sandru@sintef.no

³ Beijing Key Laboratory of Ionic Liquids Clean Process, Institute of Process Engineering, Chinese Academy of Sciences, P.O. Box 353, Beijing 100190, China; xpzhang@ipe.ac.cn

* Correspondence: xuezhong.he@ntnu.no; Tel.: +47-7359-3942

Received: 31 July 2018; Accepted: 29 August 2018; Published: 1 September 2018



Abstract: The mixture of the ionic liquid 1-ethyl-3-methylimidazolium acetate (EmimAc) and dimethylsulfoxide (DMSO) was employed to dissolve microcrystalline cellulose (MCC). A 10 wt % cellulose dope solution was prepared for spinning cellulose hollow fibers (CHF) under a mild temperature of 50 °C by a dry–wet spinning method. The defect-free CHF were obtained with an average diameter and thickness of 270 and 38 μm, respectively. Both the XRD and FTIR characterization confirmed that a crystalline structure transition from cellulose I (MCC) to cellulose II (regenerated CHF) occurred during the cellulose dissolution in ionic liquids and spinning processes. The thermogravimetric analysis (TGA) indicated that regenerated CHF presented a similar pyrolysis behavior with deacetylated cellulose acetate during pyrolysis process. This study provided a suitable way to directly fabricate hollow fiber carbon membranes using cellulose hollow fiber precursors spun from cellulose/(EmimAc + DMSO)/H₂O ternary system.

Keywords: ionic liquids; cellulose; hollow fiber; spinning; viscosity

1. Introduction

Membrane systems possess many advantages, such as small footprint, low capital and operating costs, being environmentally friendly, no-moving part for the separation as such, and exhibiting process flexibility, which attracts great interest in different gas separations, such as air separation, natural gas sweetening, and biogas upgrading. Most of commercial membranes for gas separation today are polymeric membranes. However, polymer membranes have several limitations for the application in harsh conditions, such as natural gas sweetening, and their relatively low separation performance was found to be caused by membrane compaction and plasticization. Carbon membranes with high mechanical strength can potentially operate at high pressure without having significant loss of separation performance. Carbon membranes are ultra-microporous inorganic membranes prepared mainly by carbonization of polymeric precursors, and typically form a graphitic or turbostratic structure, which presents high mechanical strength and moderate modulus compared to the graphitized fibers. Different polymeric precursors, mainly polyimides (PI) and cellulose derivatives, have been used for preparation of carbon membranes [1–3]. Our previous cellulosic-derived carbon membranes showed high CO₂/CH₄ selectivity, but relatively low CO₂ permeance (<0.1 m³(STP)/(m²·h·bar)) [4]. Moreover, the cellulosic-derived carbon membranes have major fabrication challenges related to fiber drying after

deacetylation of the cellulose acetate (CA) hollow fiber precursors [5]. Thus, preparation of carbon membranes directly from cellulose hollow fibers (CHF) could be a potential solution to address the challenges for high performance carbon membrane development. Processing cellulose is, however, difficult in general, because this natural polymer material is not soluble in conventional solvents (e.g., *N*-methyl pyrrolidone, NMP) due to its inter- and intra-hydrogen bonding, and semicrystalline structure. Ionic liquids (ILs), as a new type of green solvent, provide the possibility to dissolve cellulose [6,7] and lignocellulosic biomass [8,9] in a clean process, which has attracted a great deal of academic and industrial interest. Compared to conventional solvents, ILs show remarkable properties, such as a very low vapor pressure, high thermal stability, non-volatility, and low eco-toxicity. Moreover, by proper selection of cation–anion combinations, ILs can be designed with desired properties (e.g., viscosity, cellulose solubility, and eco-toxicity) [10,11]. Among them, 1-butyl-3-methylimidazolium chloride ([Bmim]Cl) has been reported to dissolve lignocellulosic biomass at above glass transition temperature (180 °C) and spin cellulose fibers [12,13]. However, spinning hollow fibers under such high temperatures is not suitable, due to the difficulty of controlling the temperature of the dope solution reservoir and coagulation bath. In order to reduce dope solution viscosity and, thus, spin hollow fibers at a mild temperature, the solvent dimethylsulfoxide (DMSO) was introduced as co-solvent to decrease the solution viscosity. It was suggested that DMSO, as an aprotic solvent, could partially break down the ionic interaction of [C₄mim]⁺ and [CH₃COO][−] by solvation of the cation and anion [14], resulting in an accelerated dissolution process and decreased viscosity. Moreover, adding DMSO into the solvent for cellulose dissolution is an economical way to reduce hollow fiber production cost. A mixed solvent of ionic liquid [Bmim]Cl and DMSO was reported to spin cellulose hollow fibers (CHF) by dry–wet spinning method at 80 °C, using a dope solution of 9 wt % cellulose in [Bmim]Cl-DMSO (weight ratio was 3:1) [15]. The prepared hollow fiber membranes showed a potential application in wastewater treatment. Recently, cellulose flat sheet membranes were fabricated by phase inversion using 1-ethyl-3-methylimidazolium acetate (EmimAc) and EmimAc-DMSO [16]. By coagulation in different non-solvents (water and ethanol), the membranes showed different surface morphologies and blue dextran rejections. However, to date, there are no studies that have reported CHF spinning under moderate/mild temperature (e.g., <50 °C) based on a green spinning process. Thus, exploring the dissolution of cellulose at lower temperature and spinning CHF are essential to simplify hollow fiber carbon membrane preparation procedure and reduce production cost for future upscaling and commercialization.

In the present work, the EmimAc-DMSO co-solvent was chosen to dissolve microcrystalline cellulose (MCC), and then spin hollow fibers at a mild temperature by dry–wet spinning method. In order to evaluate the suitability of their applications in making hollow fiber carbon membranes, the morphology, structure, and thermal properties of regenerated CHF were comparatively characterized by different methods. This work presents a unique green approach for the fabrication of CHF.

2. Materials and Methods

2.1. Materials

MCC (Avicel PH-101, particle size ~50 μm) and DMSO (Feed Grade, ≥99%) were purchased from Sigma-Aldrich, Oslo, Norway, and used as received. The ionic liquid of EmimAc was provided by the Institute of Process Engineering, Chinese Academy of Sciences (IPE-CAS). Prior to the use, EmimAc was washed by ethyl acetate to remove the impurities, and the pure IL structure was confirmed by ¹H and ¹³C NMR [17]. Tap water was used as non-solvent in the coagulation and rinsing baths. Ethanol (96% pure) was bought from Sigma-Aldrich, Oslo, Norway, for final solvent exchange, before drying of hollow fibers.

2.2. Dope Solution Preparation

The MCC and EmimAc were dried at 80 °C under vacuum (ca. 850 mbar) for 72 h to remove adsorbed water before making dope solutions. The co-solvent of 75 wt % EmimAc/25 wt % DMSO was used to dissolve cellulose. A given amount of MCC was gradually added into the co-solvent under mechanical stirring (500 rpm) at 50 °C for 12 h. The dope solution of 10 wt % cellulose in (EmimAc + DMSO) was prepared inside a nitrogen glove box to avoid water adsorption.

2.3. Spinning CHFs

A typically dry–wet method spinning process is illustrated in Figure 1. The pre-conditioning of dope solution was conducted by removing any solid impurities through a porous stainless steel filter. To ensure an air bubble-free dope solution, the filtered dope solution was degassed in the spinning reservoir for 24 h. It was worth noting that filtration and degassing steps are crucial for hollow fiber spinning, as undissolved polymers or air bubbles present in the dope solution will lead to the formation of defects or macrovoids inside the hollow fibers. The extrusion rates of dope solution and bore solution (20 wt % water/60 wt % EmimAc/20 wt % DMSO) were controlled by two gear pumps at different ratios. A double spinneret with outer diameter of 0.7 mm and inner diameter of 0.5 mm was used for spinning hollow fibers. A rubber pulling wheel was employed to control the take-up speed of spun fibers. The spinning parameters have significant influences on the hollow fiber morphology, structure, and properties [18], and should be optimized to obtain suitable hollow fibers for making carbon membranes. The spinning condition listed in Table 1 was used to fabricate defect-free CHFs. Following the hollow fiber spinning, the obtained hollow fibers were placed in a water bath overnight to remove excess solvent. The hollow fibers were finally dried at room temperature and in a dust free area for subsequent characterization and carbon membrane fabrication.

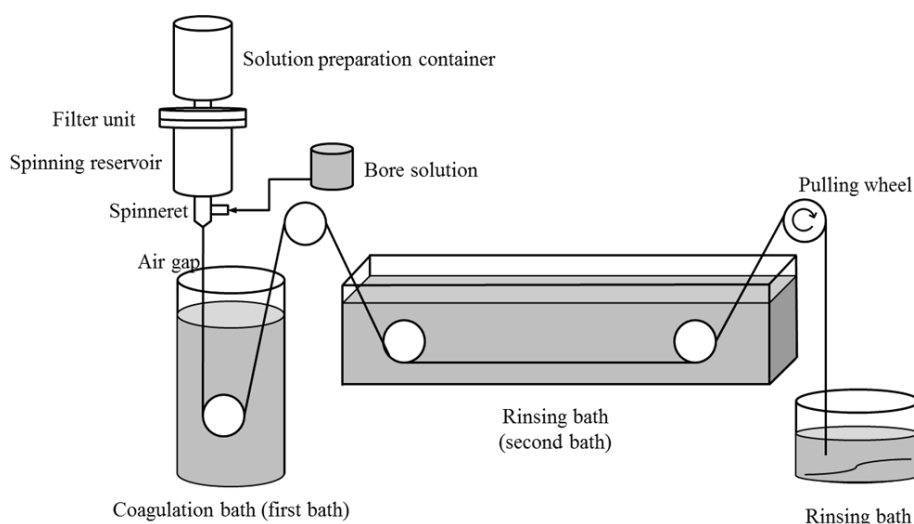


Figure 1. Schematic diagram of the spinning process.

Table 1. List of spinning condition.

Spinning Parameter	Value
Dope flow rate, mL/min	3.2
Bore fluid flow rate, mL/min	1.7
Bore fluid composition, wt %	60 EmimAc + 20 DMSO + 20 H ₂ O
Air gap, mm	50
Take-up speed, m/min	14.6
Coagulation and rinsing bath temperature, °C	25 ± 1

2.4. Characterization

Water adsorption behavior of EmimAc was investigated by Fourier transform infrared (FTIR) spectra analysis (Nicolet iS50 FTIR Spectrometer, Thermo Scientific, Oslo, Norway) and thermogravimetric analysis (TGA) using TG 209F1 Libra from Netzsch, Malmö, Sweden. The rheological properties of cellulose/IL solutions were measured by a Discovery HR-2 Rheometer from TA Instruments, Oslo, Norway, equipped with a 20 mm parallel plate geometry and Peltier Plate Steel temperature control system. A low viscosity silicon oil (~20 mPa·s) was used to minimize the effort of water absorption into the solutions during analysis. An Axio Imager A1 optical microscope from Carl Zeiss, Oslo, Norway, was used to investigate the dissolving process with polarized and non-polarized light, and preliminarily analyze the morphology of wet hollow fibers. The structure and morphology of dried hollow fibers were characterized by scanning electron microscope (SEM) from Hitachi High Technology, Lidingö, Sweden (TM3030 tabletop microscope). The SEM samples were prepared in liquid nitrogen, and then sputter-coated with gold layer.

FTIR analysis of the solutions and celluloses were performed to characterize the chemical structures with a wave number range of 650 to 4000 cm^{-1} under ambience. The thermal stabilities of MCC and CHF were investigated by TGA with a heating rate of 2 $^{\circ}\text{C}/\text{min}$ from room temperature to 600 $^{\circ}\text{C}$ under nitrogen flow. The degree of crystallinity of the MCC and regenerated CHF samples were determined by X-ray diffraction (XRD) method. The scans were conducted from 5 $^{\circ}$ to 60 $^{\circ}$ on Bruker D8 A25 DaVinci X-ray Diffractometer, Solna, Sweden with Cu $K\alpha$ radiation. The crystallinity index (CrI) of celluloses were estimated by the following empirical equation [19]:

$$\text{CrI} = \frac{I_{total} - I_{am}}{I_{total}} \times 100\% \quad (1)$$

where I_{total} is the intensity at the main peak and I_{am} is the minimum intensity between the main and secondary peaks.

3. Results and Discussion

3.1. Water Adsorption in EmimAc

In order to document water adsorption behavior, a 10 wt % MCC/EmimAc solution was prepared for the FTIR and TGA analysis. The sample solution was exposed to ambient air for different time, and the results are shown in Figure 2. It can be seen that the amount of adsorbed water in the solution significantly increases over time, based on the increased intensity of the -OH group at the wave number of 3400 cm^{-1} (i.e., the characteristic peak of H_2O). Moreover, higher weight loss of the solution exposed for longer time (e.g., 40 min) was found compared to that with the short time exposure. Both FTIR and TGA results proved a strong water adsorption behavior in EmimAc. A rheological study regarding water content in native cellulose/IL solutions revealed tiny amounts of water (~0.25 wt %) could have a significant effect on the rheological properties [20]. Moreover, the presence of water in the solvent can affect the dissolution behavior. Liu et al., reported that the ratio of IL and water can improve the gelatinization or dissolution of corn starch in [MMIM][(MeO)· HPO_2] [21]. In this work, to avoid the risk of viscosity increase and precipitation of cellulose in the spinneret, preparation of cellulose/EmimAc solution was conducted in a nitrogen glove box, to precisely control the solution composition for the subsequent spinning.

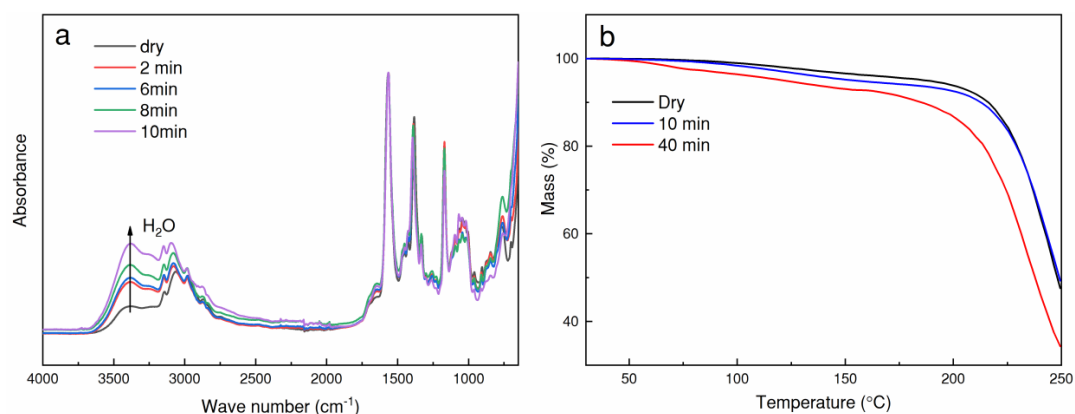


Figure 2. FTIR spectra (a) and TGA curves (b) of 10 wt % cellulose/EmimAc solution exposed to ambient air.

3.2. Viscosity of Cellulose/IL Solution

The viscosity of dope solution is crucial for hollow fiber spinning, and should be lower than 270 Pa·s, according to our practical experience, for the actual spinning equipment used. If the viscosity of dope solution is higher than 270 Pa·s, it can be very difficult to extrude the dope solution continuously. This is because the high viscosity will lead to inlet starvation of the pump, and will thus cause the trapping of air bubbles in the inlet of spinneret. For a different spinning rig, the value might be different. Figure 3 shows the viscosity of cellulose/EmimAc and cellulose/(EmimAc + DMSO) solutions with different composition. It can be seen that the viscosities of different cellulose/(EmimAc + DMSO) solutions decreases with the increase of temperature. A much lower viscosity for cellulose/(EmimAc + DMSO) system was obtained compared to the corresponding cellulose/EmimAc solution without DMSO. It was also found that the 10 wt % cellulose/(EmimAc + DMSO) solutions has an obviously lower viscosity of ~12 Pa·s than 5 wt % cellulose/EmimAc solution of ~115 Pa·s at 50 °C. The reason is that DMSO can partially break down the ionic association between $[C_4mim]^+$ and $[CH_3COO]^-$ to produce more free $[CH_3COO]^-$ anions, and thus increase the dissolution rate and reduce viscosity, as reported by Zhao et al. [14]. For the dry-wet spinning process, a dope solution with suitable viscosity and high polymer concentration is usually required, as the low viscosity guarantees the process feasibility, and high polymer concentration ensures the high mechanical strength of hollow fibers [15]. Thus, a 10 wt % MCC/(EmimAc + DMSO) dope solution was chosen for hollow fiber spinning at 50 °C.

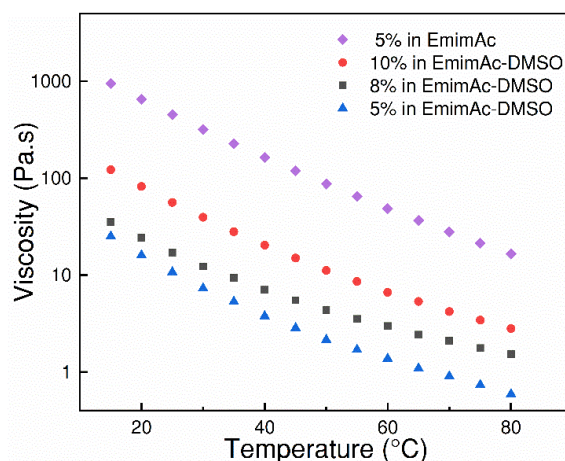


Figure 3. The viscosities of different cellulose/ionic liquid (IL) solutions as a function of temperature.

3.3. Morphology of CHF_s

Various spinning conditions were employed to fabricate different cellulose hollow fibers (see the Supplementary Materials), and the CHF_s spun under the conditions listed in Table 1 were identified as the best precursors for further characterization in this work. During the spinning process, the morphology of wet hollow fibers was preliminary investigated by the optical microscope. A typical cross-sectional image for a wet CHF is displayed in Figure 4. The average diameter and thickness of wet CHF_s were found to be ca. 1000 and 160 μm , respectively. The morphology of dried CHF_s was characterized by SEM, and Figure 5 shows the cross-sectional images of the dried CHF_s. The hollow fibers showed significant shrinkages after drying with an average outer diameter and thickness of 270 and 38 μm , respectively (Figure 5a). It can be seen that the spun CHF_s formed a defect-free structure. During the spinning process, a delayed demixing occurred as the starting point of dope solution composition was far away from the binodal curve. Therefore, the regenerated cellulose chains move close to each other, and result in a dense structure as shown in Figure 5b. It was also found that the outer and inner structure of hollow fibers were only a little different, as shown in Figure 5c,d, which is attributed to the (EmimAc + DMSO)/H₂O mixture used in the bore solution, instead of water in the coagulation bath. However, no significant difference in porosity can be seen from the SEM images. It should be noted that the SEM images reported in this work have relatively low resolution, and thus it is impossible to see the different structure on that scale. The dense structure of the spun CHF_s shows a potential to be used as suitable precursors for making carbon membranes subsequently, or membranes for specific separation processes.

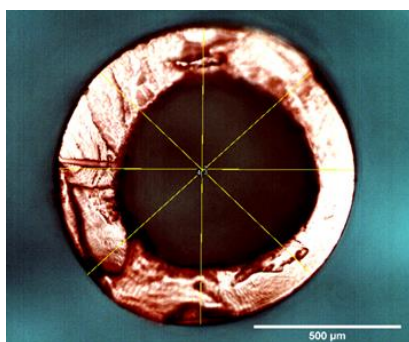


Figure 4. Cross-sectional image of a wet CHF obtained from optical microscope.

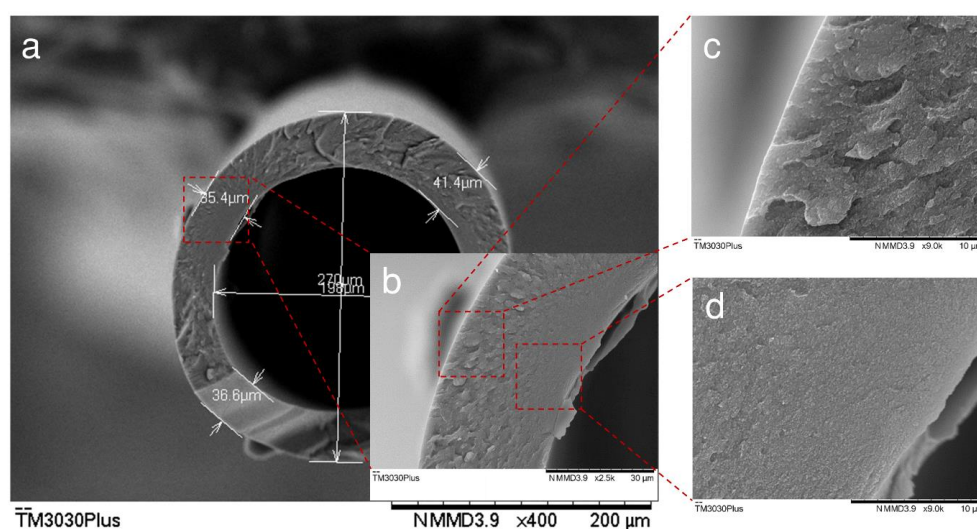


Figure 5. SEM images of (a,b) cross section of CHF; (c) outside layer of CHF; (d) inside layer of CHF.

3.4. FTIR Analysis of CHF_s

Figure 6 presents the FTIR spectra of solvents, polymer solutions, MCC, and CHF_s. Compared to the 10 wt % dope solution, the characteristic peaks of CHF_s at position 1570 and 1039 cm^{-1} , corresponding to the C=N bond in EmimAc and S=O bond in DMSO, disappear. This implies that most of the co-solvent was removed during the coagulation and solvent-exchanging process. Moreover, a bond shifting was observed between MCC and CHF_s, as shown in Figure 6b, with a narrow wave number in the range of 800–1200 cm^{-1} . The peak of MCC at 1161 cm^{-1} , corresponding to C–O–C stretching vibrations, shifts to 1156 cm^{-1} in CHF_s, which indicates that the cellulose I crystalline structure in MCC was transformed to cellulose II in the CHF_s during the spinning process, as has been reported in the literature [22]. The stretching of C–O bond located at 1111 cm^{-1} in MCC shifts to 1097 cm^{-1} in the regenerated CHF. Moreover, the characteristic peak of the C–O–C stretching at the β -(1 \rightarrow 4)-glycosidic linkage appears at 895 cm^{-1} in CHF_s also proved the cellulose crystalline structure transition [22–24].

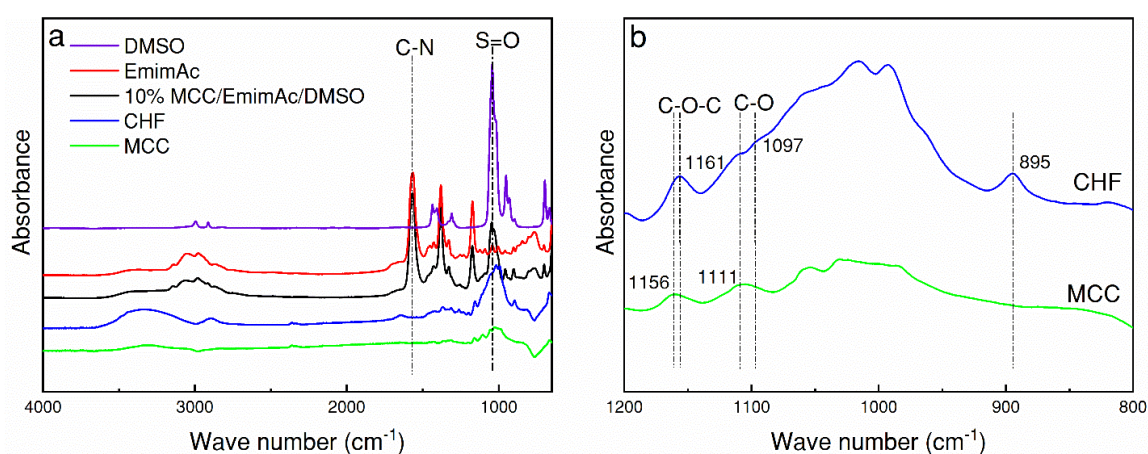


Figure 6. FTIR spectra of (a) solvents, polymer solution, MCC and CHF; (b) zoom in the range of 800–1200 cm^{-1} for MCC and CHF.

3.5. Crystallinity of CHF_s

In order to document the crystalline structure transition reported in the literature [25], XRD analysis on MCC and the regenerated CHF_s was conducted, and the results are shown in Figure 7. The XRD patterns illustrated the diffraction patterns of the samples, whereas the corresponding crystallinity can be estimated by the Equation (1). The main characteristic peaks of MCC in XRD patterns are $2\theta = 14.7^\circ$, 16.5° , and 22.6° , which correspond to the reflection planes (1 0 1), (1 0 1), and (0 0 2), respectively [26–28]. However, the spun CHF_s showed a different XRD pattern. After spinning, the main peaks at 14.7° , 16.2° , and 22.6° of MCC disappear, but new peaks appear at 12.2° , and a doublet at 20.2° and 21.5° , which correspond to the reflection planes (1 1 0), (1 1 0), and (0 2 0). This result indicates that the cellulose structure was transitioned to cellulose II, which was probably caused by the easy association or aggregation of cellulose chains in ionic liquid solution, or during the spinning process, as reported in the literature [26,28–31]. In this case, a suggestion for the mechanism of crystalline structure transition is described as follows: the MCC (cellulose I) was dissolved in EmimAc/DMSO co-solvent, by disrupting the intermolecular hydrogen bonds between cellulose molecules. Then, the IL molecules were intercalated into the gap between the hydrogen-bonded molecular sheets, resulting in a disordered cellulose [25,30,32]. In the spinning (cellulose regeneration) process, the IL was exchanged with a non-solvent (water), and new hydrogen bonds between cellulose sheets were formed in cellulose II. It should be noted that the XRD data obtained in this work were

slightly different from that reported in the literature, as both the particle size and the water content can affect the peak positions.

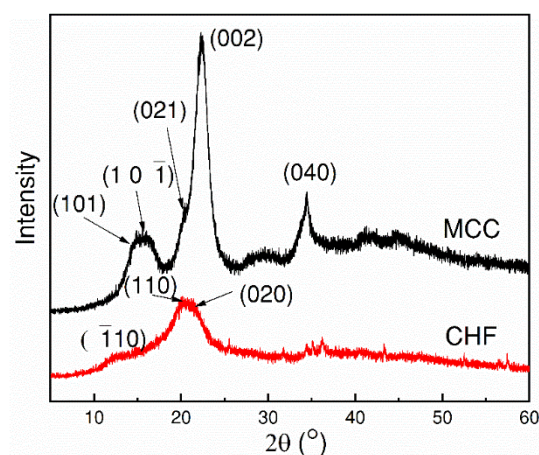


Figure 7. The XRD patterns of MCC and CHF.

For cellulose I of MCC, the main and secondary peaks are (0 0 2) and (1 0 1), located at 22.6° and 16.2° , respectively, while for cellulose II, the main peak is a doublet of (1 1 0) and (0 0 2) planes, corresponding to $2\theta = 20.2^\circ$ and 21.5° . The secondary peak appears at (1 1 0) plane at $2\theta = 12.2^\circ$. The crystallinity index of MCC and CHFs were calculated as 82.0% and 66.7%, respectively. It was worth noting that the degree of crystallinity of the CHFs decreases compared to the raw MCC, which was probably due to the fact that the original crystalline structure and the glycosidic linkages between the glucose units had been partially destroyed or modified during the dissolving and spinning processes by interaction with ionic liquids, which resulted in the reduction of the crystallinity, as reported in the literature [25,33].

3.6. Thermal Analysis of CHFs

The TGA curves of MCC and CHFs are shown in Figure 8. A steep decomposition of MCC was found in a narrow temperature range from 280 to 330 °C, and only 7.3% carbon residues was obtained after the pyrolysis. However, the weight loss curve of CHFs was slightly different from that of MCC, and both the processes of water desorption and polymer degradation were observed in CHFs. At low temperatures of 50–200 °C, a small weight loss was found due to the water desorption, and caused by the hydrophilic behavior of CHF polymers [33]. It should be noticed that CHFs presented a lower decomposition temperature and a wider decomposition temperature range, due to the decreased crystallinity of cellulose II. Moreover, due to the transition of crystalline structure, the CHF retained a higher carbon yield of 22.9%. This shows a similar pyrolysis behavior with the deacetylated cellulose acetate precursors reported in the previous work [4,34]. During pyrolysis of the TGA measurement, the water molecules generated from cellulose dehydration reaction and other volatiles, like CO, CO₂, and CH₄, eliminated from the ring opening of glycoside molecules, could accelerate the conversion of the cellulosic structure to a turbostratic carbon structure. Thus, the produced CHFs can be used as suitable precursors for preparation of hollow fiber carbon membranes by employment of a suitable carbonization procedure.

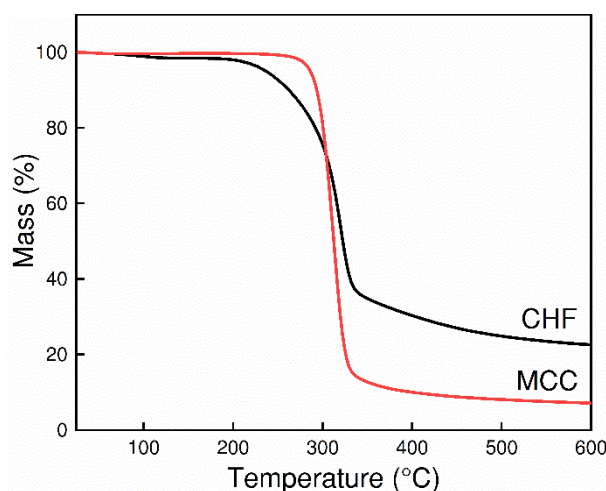


Figure 8. Weight loss of MCC and CHF by TGA.

4. Conclusions

In this work, the ionic liquid of EmimAc was identified as a good solvent for cellulose dissolution, and defect-free CHF were successfully fabricated from a dope solution of 10 wt % cellulose in EmimAc-DMSO under 50 °C. A bore flow rate of 1.7 mL/min, a dope flow rate of 3.2 mL/min, a take-up speed of 14.6 m/min, an air gap of 50 mm, and coagulation and rinsing bath temperature of 25 ± 1 °C were found to be suitable for spinning dense CHF with a typical fiber diameter and thickness of 270 and 38 μm . Moreover, DMSO was confirmed to be a good co-solvent for cellulose dissolution, which reduces the viscosity of dope solution to increase the spinning processability. The crystalline structure transition from cellulose I to cellulose II occurred during the dissolution and spinning process, as shown from the FTIR spectra and XRD patterns. The regenerated CHF presented similar pyrolysis properties with deacetylated cellulose acetate from thermal analysis, which indicates that cellulose-based hollow fiber carbon membranes can be directly prepared from the CHF precursors. Future work on the optimization of CHF with desired structure and properties, by controlling spinning condition and dope solution composition, should be conducted to develop high performance carbon membranes for gas separation.

Supplementary Materials: The following are available online at <http://www.mdpi.com/2073-4360/10/9/972/s1>, Figure S1: SEM images of spun cellulose hollow fibers, Table S1: Different spinning conditions.

Author Contributions: Conceptualization, L.L.; Data curation, L.L.; Formal analysis, L.L.; Funding acquisition, X.H.; Investigation, L.L., A.L., M.S., M.T.G.G. and X.H.; Methodology, A.L., M.S. and X.H.; Project administration, X.H.; Supervision, X.Z. and M.H.; Visualization, A.L., M.T.G.G. and M.H.; Writing—original draft, L.L.; Writing—review & editing, M.S., X.Z. and X.H.

Funding: This research was funded by Norges Forskningsråd (267615).

Acknowledgments: We thank the Research Council of Norway for funding this work through the Petromaks2 programme in the CO₂Hing project (267615). The discussions on IL viscosity with Xue Liu in IPE-CAS and hollow fiber spinning with Evangelos Favvas in NCSR “Demokritos” are also acknowledged.

Conflicts of Interest: The authors declare no conflict of interest.

References

1. He, X.; Yu, Q.; Hägg, M.-B.; Hoek, E.M.V.; Tarabara, V.V. CO₂ capture. In *Encyclopedia of Membrane Science and Technology*; John Wiley & Sons, Inc.: New York, NY, USA, 2013.
2. Favvas, E.P.; Romanos, G.E.; Papageorgiou, S.K.; Katsaros, F.K.; Mitropoulos, A.C.; Kanellopoulos, N.K. A methodology for the morphological and physicochemical characterisation of asymmetric carbon hollow fiber membranes. *J. Membr. Sci.* **2011**, *375*, 113–123. [[CrossRef](#)]

3. Favvas, E.P.; Kapantaidakis, G.C.; Nolan, J.W.; Mitropoulos, A.C.; Kanellopoulos, N.K. Preparation, characterization and gas permeation properties of carbon hollow fiber membranes based on matrimid(r) 5218 precursor. *J. Mater. Process. Technol.* **2007**, *186*, 102–110. [[CrossRef](#)]
4. He, X.; Lie, J.A.; Sheridan, E.; Hägg, M.-B. Preparation and characterization of hollow fiber carbon membranes from cellulose acetate precursors. *Ind. Eng. Chem. Res.* **2011**, *50*, 2080–2087. [[CrossRef](#)]
5. He, X. Optimization of deacetylation process for regenerated cellulose hollow fiber membranes. *Int. J. Polym. Sci.* **2017**, *2017*, 3125413. [[CrossRef](#)]
6. Swatloski, R.P.; Spear, S.K.; Holbrey, J.D.; Rogers, R.D. Dissolution of cellose with ionic liquids. *J. Am. Chem. Soc.* **2002**, *124*, 4974–4975. [[CrossRef](#)] [[PubMed](#)]
7. Wang, H.; Gurau, G.; Rogers, R.D. Ionic liquid processing of cellulose. *Chem. Soc. Rev.* **2012**, *41*, 1519–1537. [[CrossRef](#)] [[PubMed](#)]
8. Brandt, A.; Grasvik, J.; Hallett, J.P.; Welton, T. Deconstruction of lignocellulosic biomass with ionic liquids. *Green Chem.* **2013**, *15*, 550–583. [[CrossRef](#)]
9. Sun, N.; Rahman, M.; Qin, Y.; Maxim, M.L.; Rodriguez, H.; Rogers, R.D. Complete dissolution and partial delignification of wood in the ionic liquid 1-ethyl-3-methylimidazolium acetate. *Green Chem.* **2009**, *11*, 646–655. [[CrossRef](#)]
10. Deetlefs, M.; Seddon, K.R.; Shara, M. Predicting physical properties of ionic liquids. *Phys. Chem. Chem. Phys.* **2006**, *8*, 642–649. [[CrossRef](#)] [[PubMed](#)]
11. Abe, M.; Kuroda, K.; Sato, D.; Kunimura, H.; Ohno, H. Effects of polarity, hydrophobicity, and density of ionic liquids on cellulose solubility. *Phys. Chem. Chem. Phys.* **2015**, *17*, 32276–32282. [[CrossRef](#)] [[PubMed](#)]
12. Sun, N.; Li, W.; Stoner, B.; Jiang, X.; Lu, X.; Rogers, R.D. Composite fibers spun directly from solutions of raw lignocellulosic biomass dissolved in ionic liquids. *Green Chem.* **2011**, *13*, 1158–1161. [[CrossRef](#)]
13. Li, W.; Sun, N.; Stoner, B.; Jiang, X.; Lu, X.; Rogers, R.D. Rapid dissolution of lignocellulosic biomass in ionic liquids using temperatures above the glass transition of lignin. *Green Chem.* **2011**, *13*, 2038–2047. [[CrossRef](#)]
14. Zhao, Y.; Liu, X.; Wang, J.; Zhang, S. Insight into the cosolvent effect of cellulose dissolution in imidazolium-based ionic liquid systems. *J. Phys. Chem. B* **2013**, *117*, 9042–9049. [[CrossRef](#)] [[PubMed](#)]
15. Ma, B.; Qin, A.; Li, X.; He, C. Preparation of cellulose hollow fiber membrane from bamboo pulp/1-butyl-3-methylimidazolium chloride/dimethylsulfoxide system. *Ind. Eng. Chem. Res.* **2013**, *52*, 9417–9421. [[CrossRef](#)]
16. Durmaz, E.N.; Zeynep Çulfaz-Emecen, P. Cellulose-based membranes via phase inversion using [emim]oac-dmso mixtures as solvent. *Chem. Eng. Sci.* **2018**, *178*, 93–103. [[CrossRef](#)]
17. Barber, P.S.; Griggs, C.S.; Gurau, G.; Liu, Z.; Li, S.; Li, Z.; Lu, X.; Zhang, S.; Rogers, R.D. Coagulation of chitin and cellulose from 1-ethyl-3-methylimidazolium acetate ionic-liquid solutions using carbon dioxide. *Angew. Chem. Int. Ed.* **2013**, *52*, 12350–12353. [[CrossRef](#)] [[PubMed](#)]
18. He, X. Fabrication of defect-free cellulose acetate hollow fibers by optimization of spinning parameters. *Membranes* **2017**, *7*, 27. [[CrossRef](#)] [[PubMed](#)]
19. Segal, L.; Creely, J.J.; Martin, A.E.; Conrad, C.M. An empirical method for estimating the degree of crystallinity of native cellulose using the X-ray diffractometer. *Text. Res. J.* **1959**, *29*, 786–794. [[CrossRef](#)]
20. Nazari, B.; Utomo, N.W.; Colby, R.H. The effect of water on rheology of native cellulose/ionic liquids solutions. *Biomacromolecules* **2017**, *18*, 2849–2857. [[CrossRef](#)] [[PubMed](#)]
21. Shen, J.; Wang, L.; Men, Y.; Wu, Y.; Peng, Q.; Wang, X.; Yang, R.; Mahmood, K.; Liu, Z. Effect of water and methanol on the dissolution and gelatinization of corn starch in [MMIM][(MEO)HPO₂]. *RSC Adv.* **2015**, *5*, 60330–60338. [[CrossRef](#)]
22. Nelson Mary, L.; O'Connor Robert, T. Relation of certain infrared bands to cellulose crystallinity and crystal latticed type. Part I. Spectra of lattice types I, II, III and of amorphous cellulose. *J. Appl. Polym. Sci.* **1964**, *8*, 1311–1324. [[CrossRef](#)]
23. Oh, S.Y.; Yoo, D.I.; Shin, Y.; Kim, H.C.; Kim, H.Y.; Chung, Y.S.; Park, W.H.; Youk, J.H. Crystalline structure analysis of cellulose treated with sodium hydroxide and carbon dioxide by means of X-ray diffraction and ftir spectroscopy. *Carbohydr. Res.* **2005**, *340*, 2376–2391. [[CrossRef](#)] [[PubMed](#)]
24. Ruan, D.; Zhang, L.; Mao, Y.; Zeng, M.; Li, X. Microporous membranes prepared from cellulose in naoh/thiourea aqueous solution. *J. Membr. Sci.* **2004**, *241*, 265–274. [[CrossRef](#)]
25. Samayam, I.P.; Hanson, B.L.; Langan, P.; Schall, C.A. Ionic-liquid induced changes in cellulose structure associated with enhanced biomass hydrolysis. *Biomacromolecules* **2011**, *12*, 3091–3098. [[CrossRef](#)] [[PubMed](#)]

26. Ago, M.; Endo, T.; Hirotsu, T. Crystalline transformation of native cellulose from cellulose I to cellulose id polymorph by a ball-milling method with a specific amount of water. *Cellulose* **2004**, *11*, 163–167. [[CrossRef](#)]
27. Park, S.; Baker, J.O.; Himmel, M.E.; Parilla, P.A.; Johnson, D.K. Cellulose crystallinity index: Measurement techniques and their impact on interpreting cellulase performance. *Biotechnol. Biofuels* **2010**, *3*, 10. [[CrossRef](#)] [[PubMed](#)]
28. Zhu, C.; Richardson, R.M.; Potter, K.D.; Koutsomitopoulou, A.F.; van Duijneveldt, J.S.; Vincent, S.R.; Wanasekara, N.D.; Eichhorn, S.J.; Rahatekar, S.S. High modulus regenerated cellulose fibers spun from a low molecular weight microcrystalline cellulose solution. *ACS Sustain. Chem. Eng.* **2016**, *4*, 4545–4553. [[CrossRef](#)]
29. Cheng, G.; Varanasi, P.; Arora, R.; Stavila, V.; Simmons, B.A.; Kent, M.S.; Singh, S. Impact of ionic liquid pretreatment conditions on cellulose crystalline structure using 1-ethyl-3-methylimidazolium acetate. *J. Phys. Chem. B* **2012**, *116*, 10049–10054. [[CrossRef](#)] [[PubMed](#)]
30. Cheng, G.; Varanasi, P.; Li, C.; Liu, H.; Melnichenko, Y.B.; Simmons, B.A.; Kent, M.S.; Singh, S. Transition of cellulose crystalline structure and surface morphology of biomass as a function of ionic liquid pretreatment and its relation to enzymatic hydrolysis. *Biomacromolecules* **2011**, *12*, 933–941. [[CrossRef](#)] [[PubMed](#)]
31. Peng, X.-W.; Ren, J.-L.; Zhong, L.-X.; Sun, R.-C. Nanocomposite films based on xylan-rich hemicelluloses and cellulose nanofibers with enhanced mechanical properties. *Biomacromolecules* **2011**, *12*, 3321–3329. [[CrossRef](#)] [[PubMed](#)]
32. Miyamoto, H.; Umemura, M.; Aoyagi, T.; Yamane, C.; Ueda, K.; Takahashi, K. Structural reorganization of molecular sheets derived from cellulose II by molecular dynamics simulations. *Carbohydr. Res.* **2009**, *344*, 1085–1094. [[CrossRef](#)] [[PubMed](#)]
33. Pang, J.; Wu, M.; Zhang, Q.; Tan, X.; Xu, F.; Zhang, X.; Sun, R. Comparison of physical properties of regenerated cellulose films fabricated with different cellulose feedstocks in ionic liquid. *Carbohydr. Polym.* **2015**, *121*, 71–78. [[CrossRef](#)] [[PubMed](#)]
34. He, X.; Hägg, M.-B. Structural, kinetic and performance characterization of hollow fiber carbon membranes. *J. Membr. Sci.* **2012**, *390–391*, 23–31. [[CrossRef](#)]



© 2018 by the authors. Licensee MDPI, Basel, Switzerland. This article is an open access article distributed under the terms and conditions of the Creative Commons Attribution (CC BY) license (<http://creativecommons.org/licenses/by/4.0/>).