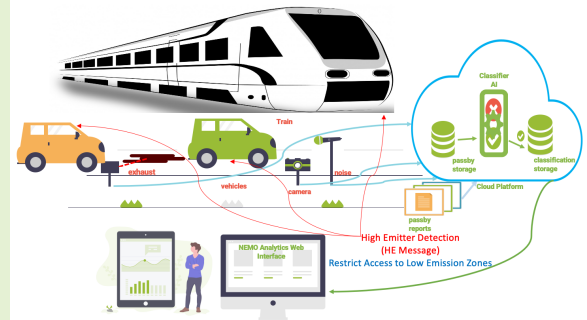


NEMO: Real-Time Noise and Exhaust Emissions Monitoring for Sustainable and Intelligent Transportation Systems

Ashish Rauniyar, *Member, IEEE*, Truls Berge, Ard Kuijpers, Paul Litzinger, Bert Peeters, Erik van Gils, Nikolas Kirchhoff, and Jan Erik Håkegård, *Senior Member, IEEE*

Abstract—Research and development efforts on sustainable and intelligent transportation systems are accelerating globally as the transportation sector contributes significantly to environmental pollution and produces a variety of noise and emissions that impact the climate. With the emergence of ubiquitous sensors and Internet of Things (IoT) applications, finding innovative transport solutions, including adequate climate change mitigation, will all be vital components of a sustainable transport future. Thus, it is essential to continuously monitor noise and exhaust emissions from road vehicles, trains, and ships. As a contribution to addressing this as part of an effort of the European Union project called “NEMO: Noise and Emissions Monitoring and Radical Mitigation”, in this paper, we propose the design and development of a real-time noise and exhaust emissions monitoring for sustainable and intelligent transportation systems. We report real-world field testing in some European cities where vehicle noise and exhaust emissions data are gathered in the cloud-enabled Nautilus platform and evaluated using artificial intelligence (AI) algorithms to determine their categorization into different classes of emitters and thereby enabling the infrastructure managers to define logic and actions to be taken by high emitters in near real-time. We outline the creation of a complete NEMO solution to monitor and reduce noise and emissions in real time for sustainable and intelligent transportation systems.

Index Terms—Artificial Intelligence, Emission, Exhaust, Internet of Things, Monitoring System, Noise, Sensors, Smart Cities, Sustainable, Transportation



I. INTRODUCTION

ENVIRONMENTAL noise is still one of the main drivers of environmental pollution in Europe, although several attempts have been made to lower the noise levels. The European Environmental Agency’s most recent report estimates that solely road traffic noise affects 113 million people, but that transportation noise affects more than 20%

Manuscript received 01 June 2023; Revised 29 June and 10th August, 2023; Accepted 05 September 2023. This article is an expanded version of the paper that was presented at the 2022 IEEE 12th Sensor Array and Multichannel Signal Processing Workshop (SAM) held on June 20-23, 2022, in Trondheim, Norway [1]. This work was funded by the European Union’s Horizon 2020 project - “NEMO: Noise and Emissions Monitoring and Radical Mitigation”, under grant agreement number 860441.

A. Rauniyar, T. Berge and J. E. Håkegård are with Sustainable Communication Technologies, SINTEF Digital, 7034 Trondheim, Norway (e-mail: ashish.rauniyar@sintef.no; truls.berge@sintef.no; jan.e.hakegard@sintef.no).

A. Kuijpers, B. Peeters, and E. v. Gils are with M+P, Netherlands (e-mail: ArdKuijpers@mp.nl; BertPeeters@mp.nl; ErikvanGils@mp.nl).

P. Litzinger is with Kapsch TrafficCom, Austria (e-mail: paul.litzinger@kapsch.net).

N. Kirchhoff is with Müller-BBM Industry Solutions GmbH, Germany (e-mail: nikolas.kirchhoff@mbbm-ind.com).

Accepted for Publication in IEEE Sensors Journal

of the European Union’s (EU) population in general [2]. According to a growing body of research, transport noise may disrupt sleep, lead to cardiovascular illness, hormonal imbalances, psychological issues, and even lead to early mortality [3]–[5]. Studies on long exposure to noise have found cognitive decline and a lower quality of life among young children [6]. Moreover, compared to other energy end-use sectors, the transport sector’s share of global energy-related CO₂ emissions has grown rapidly. In particular, the transportation sector causes 29% of global CO₂ emissions [7], and reducing its impact is an important step in any climate change mitigation plan. Therefore, transportation noise and exhaust emissions are considered as one of the major threats to people’s health and quality of life [8]–[10]. Indeed, vehicle noise and exhaust emissions will continue to increase in scale and intensity due to population expansion, urbanization, and unprecedented growth associated with vehicle use if there are no intelligent methods to monitor and detect these pollutants [11], [12].

According to recent scientific studies, nearly 80% of the pollution produced by road traffic is due to the highest emitter vehicles [13], [14]. These small number of high-emitter road

users who make excessive noise and exhaust emissions are receiving more and more attention. Several European municipalities have stated that they intend to use noise measures to keep loud show-off vehicles and motorbikes with illegal exhausts out of the city centre and off of scenic backroads [15]. Cities are establishing Low-Emission Zones (LEZ) to control access to older high-emission vehicles while avoiding punitive measures against more recent automobiles that are within the prescribed threshold limit of noise and emissions [16]. LEZs are essentially metropolitan districts that require certain types of vehicles, such as heavy goods trucks (HGVs), delivery vehicles, buses, taxis, private automobiles, etc., to meet certain emission standards in order to enter free of charge or to avoid paying a fee [17]–[19]. Therefore, it is necessary to regulate better the actual emissions generated by vehicles in urban areas. Because of this, there is a great interest in broadly identifying these high emitters in real time in order to be prepared to control and reduce noise and exhaust emissions. This class of high-emitting vehicles must be adjusted; therefore, accurate measurements of their noise and exhaust emissions under actual driving conditions are required. Furthermore, for Europe to become the first climate-neutral continent in the world, emissions from the transportation sector must be monitored and reduced further and quickly.

With the rapid advancement in the Internet of Things (IoT), artificial intelligence (AI) and remote sensing technologies, it is now possible to sense and analyze various environmental events in real-time for a variety of Internet of Vehicles (IoV) applications [20]–[23]. With the advent of advance AI, IoT, IoV and remote sensing technologies, it is possible to measure road traffic emissions on a large scale, effectively, and inexpensively. With these technologies, communities may more effectively and fairly enhance their noise and air quality by identifying high-emitting individual vehicles and thereby improving traffic decision-making. Leveraging cutting-edge remote sensing technology and extensive real-time sensor data analysis, researchers are now aiming to implement effective monitoring and mitigation methods to significantly decrease noise and exhaust emissions for all modes of transportation.

An assessment of remote sensing devices' (RSD) measurement performance to screen vehicle emissions was carried out in [24]. The main focus was on gaseous pollutants such as nitrogen oxide (NO), nitrogen dioxide (NO₂) and carbon monoxide (CO) from light-duty vehicles. The findings suggested RSDs as a potential technique for screening automobile emissions to determine which vehicle types and which vehicles are high or low polluters under a particular set of driving conditions. Similarly, it has also been reported in [25] that using on-road remote sensing equipment as part of an enforcement campaign to enhance urban air quality can quickly, accurately, and affordably identify high-emitting vehicles. Moreover, there have also been some projects such as Life GySTRA¹ that used RSDs to detect high emitters on the road and then be checked for accuracy at a well-equipped inspection station [13]. By

taking such measures, their emissions may be brought down to levels that are typical for vehicles, which would greatly reduce overall road transport emissions and, in turn, the health problems that air pollution brings about. Data-driven analysis was used in [26] to assess how the electrification of the city of Rome's public transportation system and private vehicle fleet will affect energy demand, climate change, and air pollution emissions. However, all of these studies focused on monitoring vehicles' gaseous (exhaust) emissions and identifying high emitters. Additionally, research has been done on mapping, modelling, and measuring the amount of traffic noise in urban areas such as [27]–[31].

Even though there is research on the noise and exhaust emissions of vehicles, these systems are either ineffective at measuring actual driving conditions or require a single vehicle to be installed intrusively and used for a long period to collect reliable data. Therefore, it is obvious that real-time measurements of the different types of vehicle noise and exhaust emissions are not readily available. This makes it challenging to accurately analyze and estimate the noise and exhaust emissions from various types of vehicles in real time. In addition, real driving emissions (RDE) refer to the emissions produced by vehicles in real-world driving conditions. This type of testing accurately assesses vehicle emissions on an individual basis while they are actually being driven. Unlike traditional laboratory testing, RDE testing evaluates vehicle emissions beyond controlled settings, taking into account various factors like speed, payload, and driving behaviour. The primary goal of RDE tests is to verify that vehicles meet the emission standards as stated on paper when operating on the road. Hence, there is a need for standardized assessment techniques to improve the validity of the data gathered and the efficacy of the ensuing awareness-raising and mitigation measures. Systems built into the transportation infrastructure can assist in identifying high-emitter vehicles that are not respecting the prescribed limits and therefore restricting their access to designated LEZs.

This work outlines the design and implementation of a real-time monitoring system for noise and exhaust emissions for intelligent and sustainable transportation systems, including road vehicles and trains, as an effort of the EU project called "NEMO: Noise and Emissions Monitoring and Radical Mitigation"². During the pilot testing in multiple European cities such as Rotterdam (Netherlands), Barcelona (Spain), Florence (Italy), and the Austrian village Teesdorf, real-world sensor data from various vehicles and trains are monitored and gathered to effectively test the NEMO system and identify the high emitters (both in terms of noise and exhaust emissions) in real-time. We have developed a complete application that enables an analyst and infrastructure manager to track real-time sensor data related to the noise and gaseous emissions of road vehicles and trains. The data on individual road vehicles and trains are collected in the cloud platform, assessed, and classified as high, medium, low or normal emitters using AI-enabled classification algorithms. Through novel RSD technologies and NEMO system implementation,

¹<https://lifegystra.eu/en/home/>

²<https://nemo-cities.eu/>

this paper aims to provide a holistic solution to identify high emitters in real time to simultaneously monitor noise and exhaust emissions for sustainable and intelligent transportation systems.

A. Comparative Analysis

In our comparative analysis of the NEMO system, it is important to highlight the novelty of our proposed solution. We have conducted a comprehensive evaluation of existing systems, and we have found that there are no comparable alternatives to the NEMO system currently available. While there are some solutions, such as the Hydra system developed by Bruitparif [32], that share certain functionalities with the NEMO system, it is essential to note the distinct capabilities and limitations of each.

In comparison to the Hydra solution, which primarily focuses only on tracking excessively noisy road vehicles, our NEMO system offers a more comprehensive approach. Unlike the Hydra system, the NEMO system is designed to detect, classify and analyze both noise and exhaust emissions from road vehicles and also from trains. This distinction highlights the significant advantage of the NEMO system over existing competitors, as it provides a more comprehensive and accurate understanding of the impact of road vehicles and trains' noise and exhaust emissions. The NEMO system's advanced capabilities position it as an innovative and powerful tool for different stakeholders in addressing noise and pollution challenges in urban environments.

B. Paper Contributions

In summary, the major contributions of this paper can be outlined as follows:

- 1) In pursuit of the EU's commitment to monitoring noise and exhaust emissions, we present the NEMO system, a totally new autonomous remote sensing technology to accurately and cost-effectively identify and classify transgressing noisy and high exhaust emitter vehicles (including road vehicles and trains) in near real-time to control noise and air quality and mitigate detrimental impacts on public health and the environment.
- 2) We have integrated different sensors to effectively measure noise and emissions of road vehicles and trains in the existing infrastructures, which enable the NEMO system to identify noise origin in a dense traffic stream and localize high emitters in real-time.
- 3) Moreover, we have also created a complete software and communication infrastructure, such as infrastructure-to-infrastructure (I2I) and infrastructure-to-vehicles (I2V) based on remote sensing data to enable different infrastructure integration options.
- 4) Data from real-world field testing of individual road vehicles and trains in European cities such as Rotterdam and the Austrian village Teesdorf are collected in the cloud platform and evaluated using our AI-based classification algorithm to accurately detect and classify them as high, medium, and normal emitters.
- 5) Finally, we present the development of a comprehensive NEMO solution. The appropriate traffic regulating

agencies and stakeholders may use our NEMO system to put notification systems in place to address noise and pollution challenges in urban environments.

C. Paper Organization

The rest of this paper is organized as follows: Section II describes the NEMO system model. The NEMO system's functional architecture is briefly presented in Section III. The noise source detection and localization algorithm is described in Section IV. The AI-enabled classification model is presented in Section V. NEMO system deployment and its field testing results are explained in Section VI. The NEMO CDS system for real-time communication between the NEMO system and vehicles is detailed in Section VII. Section VIII outlines the NEMO system's graphical user interface platform for road vehicles and trains and provides the data analysis. Finally, conclusions are drawn, and future works are proposed in Section IX.

II. NEMO: NOISE AND EMISSIONS MONITORING AND RADICAL MITIGATION SYSTEM MODEL

In this section, we present our NEMO system that can measure noise and exhaust emissions from individual road vehicles and trains and identify the high emitters in real-time. By empirically evaluating individual vehicles and applying customized tariffs on the most polluting vehicles, and blocking their entry to LEZs, our NEMO system seeks to develop cutting-edge RSD-based solutions to reduce emissions and noise from the transportation industry. The NEMO monitoring system model and its dataflow diagram are shown in Fig. 1.

Nautilus, an integral software infrastructure component of the NEMO system model, seamlessly merges remote sensing and data processing to effectively categorize the noise and exhaust emissions of road vehicles and trains. Illustrated in Fig. 1, Nautilus comprises four major components: the Synchronizer, the Data Hub, the Classification Dialog System (CDS), and the Analytics components. In the subsequent section, we will delve into a comprehensive explanation of each of these components and their respective roles.

To facilitate the measurement of noise and exhaust emissions, remote sensing technology is strategically deployed at various locations, such as tolling stations, roadsides, and railway lines. At each site, the diverse sensor arrays capture raw measurement data, which is subsequently synchronized by the Synchronizer to obtain a holistic representation of the vehicle's noise and exhaust emissions. For illustrative purposes, we will primarily focus on road vehicles throughout our discourse. However, it is important to note that the design and interfaces of the Synchronizer can be appropriately adapted for train-specific applications by substituting relevant terminologies like "road," "rail," "lane," "wagon," etc.

Upon successful synchronization of the raw data, the Synchronizer interfaces with a comprehensive vehicle registry database to retrieve crucial vehicle characteristics necessary for the subsequent classification process. These characteristics encompass aspects such as fuel type, noise emission type, approval limits, and other pertinent details. Subsequently, this

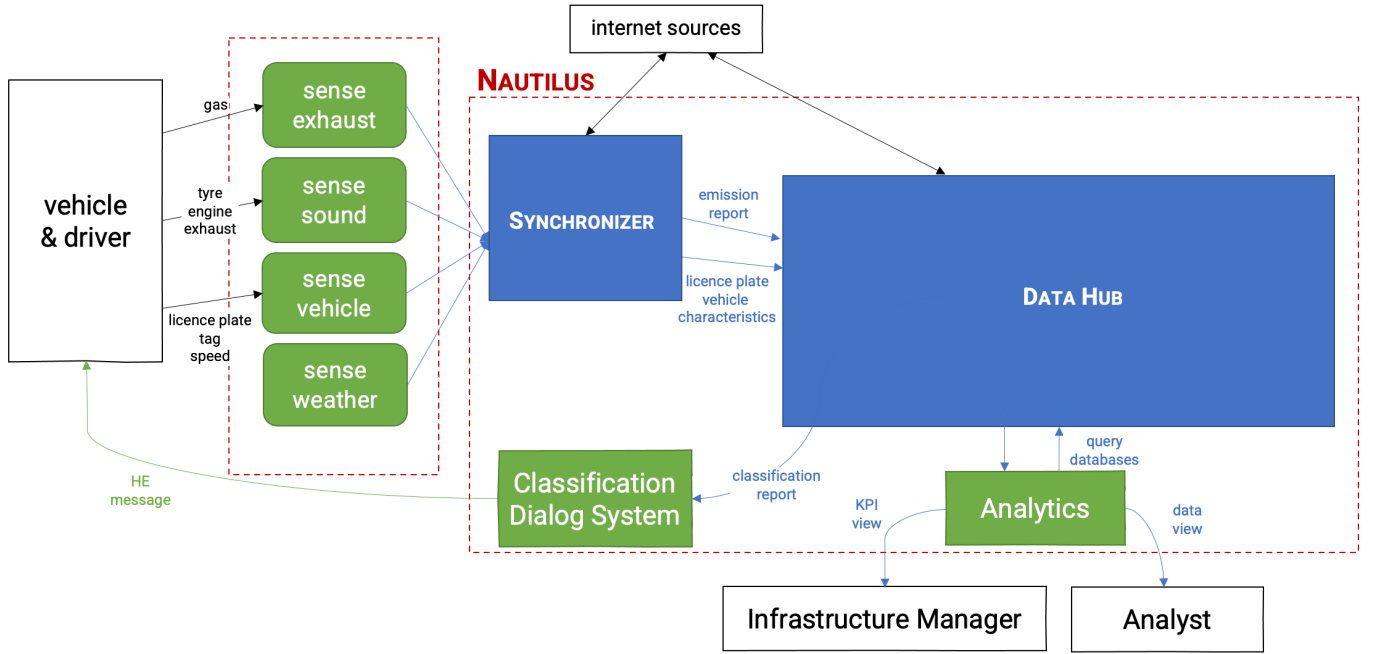


Fig. 1: NEMO monitoring system model

amalgamated dataset, comprising the sensor data and the aforementioned vehicle characteristics, is transmitted from the sensing site to a centralized Data Hub module. The transfer process is facilitated through a mechanism known as the “pass-by report,” which allows the Data Hub to diligently store the pass-by report information, thereby generating a comprehensive registry for each passing vehicle.

Using the power of AI, the Data Hub employs an AI-enabled classification model, which is expounded upon in Section IV, to categorize the noise and exhaust emissions of vehicles. This classification process involves comparing the emissions of each vehicle with those of similar vehicles, as well as with the applicable type-approval limits or high-emitting thresholds (based on type-approval or local emission limits stipulated by the relevant authorities). Upon classification, vehicles exceeding the defined thresholds are flagged as high emitters. The classification logic employed in this process can be customized to align with the specific requirements of the site, road authority, or the legislative framework of the respective jurisdiction. The resultant classifications are stored within the Data Hub for future reference.

Following the classification process, the Data Hub promptly notifies the Classification Dialog System (CDS), which subsequently communicates the classification results back to the remote sensing site (I2I). Additionally, the CDS conveys the classification outcomes to the respective vehicle or owner (I2V) through the high emitter (HE) message in near real-time. Consequently, this streamlined flow of information ensures that all relevant stakeholders are promptly informed of the vehicle’s emission categorization.

Lastly, the Analytics component serves as an invaluable data analysis platform, facilitating in-depth studies of the noise and exhaust emissions. This enables infrastructure managers and

internal NEMO users to gain comprehensive insights, which can be utilized to refine the criteria for identifying high-emitting vehicles, particularly in the context of LEZs.

III. NEMO SYSTEM FUNCTIONAL ARCHITECTURE

In this section, we present a comprehensive overview of the functional architecture of the NEMO system, focusing on the Synchronizer, the design of the Data Hub, and the main interfaces for the Nautilus platform components.

A. Synchronizer

The Synchronizer serves as a vital link between the NEMO system and the sensors, enabling the acquisition of sensor results. By establishing direct communication with the sensors, the Synchronizer facilitates the retrieval of sensory data related to passing vehicles. This interaction takes place through various interfaces within the measuring infrastructure, as illustrated in Fig. 1. Furthermore, the Synchronizer utilizes internet sources, such as the vehicle registration database (VRDB) service, to obtain vehicle characteristics based on identification details such as license plates or train wagon numbers, as depicted in Fig. 1. Once all the necessary data is gathered, it is consolidated into a pass-by report and transmitted to the Data Hub. The Synchronizer constitutes a site-specific component of the Nautilus platform, tailored to a specific type of transport (road/rail) and a particular arrangement of sensors and their placement. While the fundamental operation of the Synchronizer remains consistent across various transport modes and measurement sites, this paper focuses on describing the design and interfaces of the Synchronizer for the test site in Teesdorf, Austria, where Kapsch TrafficCom operates a test site. Thus, this design serves as a reference for all sites. For the design and interfaces

TABLE I: Synchronizer collected data

Name	Sensor/System	Data Provided	Trigger Type
TollingModule	System	- Vehicle classification data - DSRC transactions in case the vehicle is equipped with a DSRC OBU - ANPR result - Images	Pushes data to Synchronizer
NoiseModule	Sensor	Sound measurements of a vehicle passage	Triggered by Synchronizer
ExhaustModule	Sensor	Exhaust measurements of a vehicle passage	Pushes data to Synchronizer
WeatherStation	Sensor	Weather data at the location	Triggered by Synchronizer
V2XModule	System	Electronic vehicle registration document read out from the V2X OBU	Pushes data to Synchronizer
VRDBService	System	Vehicle registration document data as queried from authority	Triggered by Synchronizer

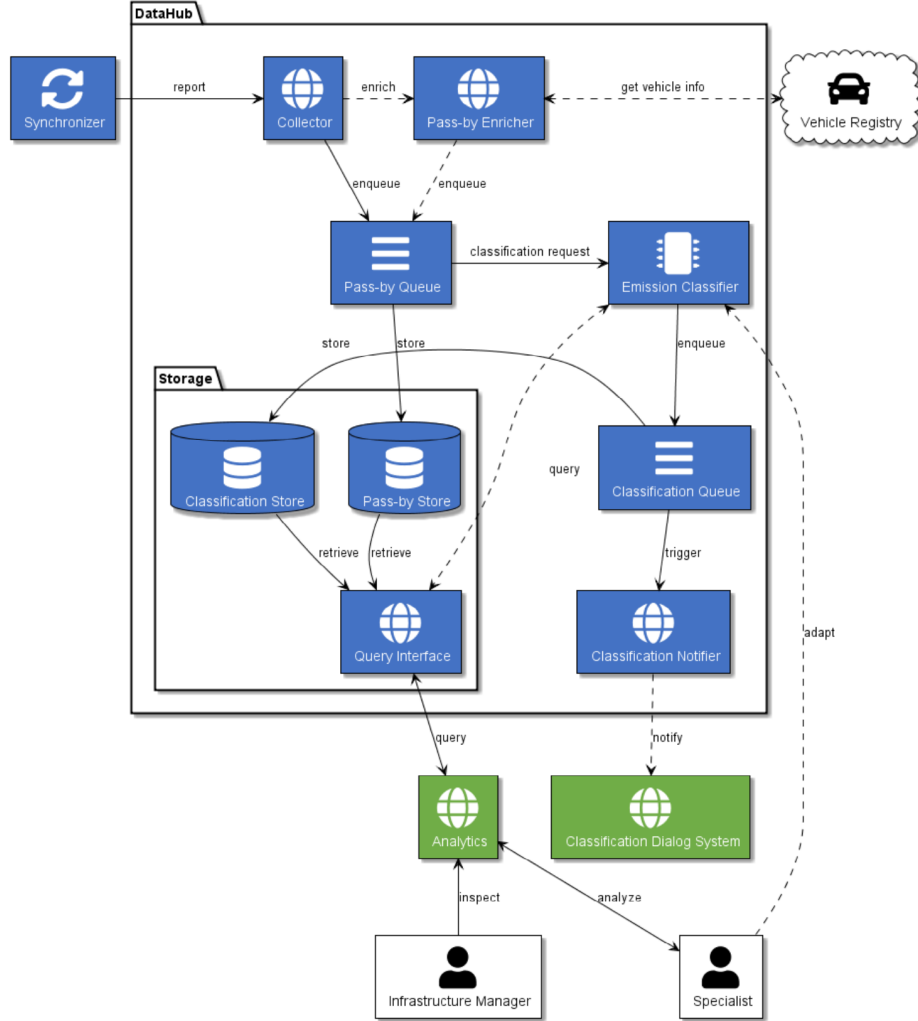


Fig. 2: Interactions between the various components of the Data Hub

TABLE II: Synchronizer matching criteria

Data	Source	Matching Criteria
ANPR Result	TollingModule	PassbyId
VehicleClassification	TollingModule	PassbyId
DSRC Transaction	TollingModule	PassbyId
NoiseModuleData	NoiseModule	PassbyId
ExhaustModule	Sensor	Time of vehicle passage
WeatherStation	Sensor	PassbyId
V2XModule	System	Time, geo-location, license plate number
VRDBService	System	PassbyId

of a railway-specific Synchronizer, terminologies such as road, rail/train, lane, and car can be substituted accordingly.

The Synchronizer process comprises several sub-processes, namely:

- 1) Collect data
- 2) Synchronize collected data (to a pass-by report)
- 3) Provide a pass-by report to the Data Hub
- 4) Additional functionality and design considerations

These sub-processes are explained briefly in the following subsections.

1) *Collect data*: The sub-process of collecting data entails the Synchronizer gathering information during a vehicle passage. The Synchronizer's responsibilities within this sub-process include triggering sensors and systems to enable the measurement and data collection of passing vehicles (particularly in pilot tests where self-triggering of sensors is utilized, synchronized based on time stamps). Additionally, the Synchronizer receives data from autonomous sensors and systems. Table I presents the sensors and systems that the Synchronizer interfaces with, accompanied by a brief description of the data they collect. The table also indicates whether the Synchronizer is triggered by the sensor/system or if it triggers them.

To initiate the sensors and systems, the Synchronizer initially needs to be notified of the vehicle's passage. The TollingModule pushes the information about the vehicle passage, serving as the initial step in the data collection process. Subsequently, depending on timing and vehicle type, further data collection takes place. The minimum set of sensor modules required to classify all vehicle emissions includes the VehicleIdentificationModule (e.g., the TollingModule at the Teesdorf test site), NoiseModule, ExhaustModule, and VRDBService module.

2) *Synchronize collected data*: Within this sub-process, the Synchronizer generates a single pass-by report for each passing vehicle and consolidates all the collected sensor and system data into this report. The synchronization process employs different criteria to match the data to the pass-by report of the vehicle passage, depending on the specific sensor/system and triggering type. The matching criteria used are outlined in Table II.

3) *Provide pass-by report*: During the sub-process of providing the pass-by report, the Synchronizer transmits the created pass-by report to the Data Hub. Additionally, the Synchronizer sends a pass-by report to the Data Hub if one of the following conditions is met: the pass-by report is completed (i.e., all data is merged), or the pass-by report time-out is reached. The time-out mechanism is necessary since the Synchronizer lacks awareness of the functional state of the sensors and systems it interfaces with. In the event of an error with a sensor or system, the Synchronizer must not wait indefinitely for a result. By adhering to the time-out threshold, the Synchronizer ensures the timely provision of pass-by reports to the Data Hub, avoiding any backlog. Moreover, the time-out feature enables the realization of the use case for vehicle-to-infrastructure (V2I) communication within the constraints of the vehicle passage. The time-out value is configurable within the Synchronizer.

4) *Additional functionality and design considerations*: In addition to the provisioning of pass-by reports, the Synchronizer is capable of capturing additional information, such as images or sound clips, during a vehicle passage. While not strictly necessary to fulfill the NEMO use case, this data can assist operators in error assessment and situational analysis at the measurement site. The Synchronizer operates on hardware situated at the measurement site, ensuring minimal network latency and facilitating swift communication with road/trackside sensors and systems. Furthermore, the Synchronizer incorporates a data cleanup mechanism to comply with the General Data

Protection Regulations (GDPR). To achieve accurate matching of sensor and system data, the Synchronizer and all sensors and systems on the measurement sites synchronize their clocks using a common network time protocol (NTP) service.

B. Data Hub

The Data Hub in the cloud provides support to the following sub-processes:

- 1) Receive incoming pass-by reports
- 2) Store the pass-by reports
- 3) Classify the emission of the individual vehicle pass-by
- 4) Store the classification reports
- 5) Notify the CDS of a new classification report
- 6) Provide a query interface for analytics to access pass-by and classification data
- 7) Receive incoming health messages from the different modules

The Data Hub encompasses various modules responsible for executing the sub-processes, as depicted in Fig. 2. Each module's role is elaborated upon in the following subsections.

1) *Receive incoming pass-by reports*: In this sub-process, the Collector module receives the data. If vehicle information is not available, the Pass-by Enricher module attempts to query it from the Vehicle Registry. Subsequently, either the Collector or the Pass-by Enricher forwards the pass-by report to the Pass-by Queue for further processing. To ensure privacy, vehicle registration data is pseudonymized, removing any sensitive information.

2) *Store the pass-by reports*: Each pass-by report received by the Pass-by Store module from the Pass-by Queue is stored in the database for future retrieval. Separate storage areas exist for road and rail pass-by reports.

3) *Classify the emission of the individual vehicle pass-by*: Within this sub-process, the Emission Classifier module receives each pass-by report from the Pass-by Queue. Based on the site identifier in the pass-by report, the Emission Classifier applies the appropriate classification model and generates a Classification Report. This report is then enqueued in the Classification Queue for further processing.

4) *Store the classification reports*: The Classification Store module receives each classification report from the Classification Queue and stores it in a database for later access. Similar to pass-by reports, road and rail classifications are stored separately.

5) *Notify the Classification Dialog System (CDS) of a new classification report*: The Classification Notifier module receives each classification report from the Classification Queue and forwards/pushes it to the CDS. The CDS, equipped with various communication channels such as vehicle on-board unit (OBU) (V2X OBU), email, SMS, and mobile application, facilitates communication with multiple sites.

6) *Provide a query interface for analytics to access pass-by and classification data*: The Query Interface module serves as a gateway for external Analytics components to request data. Upon receiving a data request, it retrieves the relevant information from the Pass-by and/or Classification Stores and provides it, subject to the requester's appropriate access rights.

TABLE III: Sensor- Synchronizer interfaces

InterfaceId	From	To	Scope / Data Exchanged	Technology	
				Transport Layer / Protocol	Data Format
V2X-SYN-1	V2XModule	Synchronizer	Interface to provide vehicle registration data configured in V2X OBU.	ZMTP pub/sub	Protocol buffers
TOL-SYN-1	TollingModule	Synchronizer	Interface to provide vehicle detection vehicle classification, ANPR result, images and DSRC transaction data.	ZMTP pub/sub	Protocol buffers
EXH-SYN-1	ExhaustModule	Synchronizer	Interface to provide measured emission data of a vehicle passage.	ZMTP pub/sub	Protocol buffers
SYN-NOI-1	Synchronizer	NoiseModule	Interface to trigger the NoiseModule so it can start measurement.	ZMTP pub/sub	Protocol buffers
NOI-SYN-1	NoiseModule	Synchronizer	Interface to provide measured sound data of a vehicle passage.	ZMTP pub/sub	Protocol buffers
SYN-WEA-1	Synchronizer	WeatherStation	Interface to receive real-time weather information of the measurement site.	ZMTP req/res	Protocol buffers
SYN-VRD-1	Synchronizer	VRDBService	Interface to request vehicle registration data.	HTTP	REST-based
VRD-SYN-1	VRDBService	Synchronizer	Interface to return requested vehicle registration data.	HTTP	REST-based

TABLE IV: Synchronizer – Data Hub interface

From	To	Operation	Scope / Data Exchanged	Technology	
				Transport Layer / Protocol	Data Format
Synchronizer	Collector	Report	pass-by report and media.	HTTP Post	REST-based
Synchronizer	Data Hub	Report and images	Provide the pass-by report and images of a vehicle passage to the Data Hub.	HTTP	REST-based

TABLE V: Pass-by report handling interface

From	To	Operation	Scope / Data Exchanged	Technology	
				Transport Layer / Protocol	Data Format
Collector	Passby Queue	enqueue	pass-by report	AMQP publish	REST-based
Collector	Passby Enricher	enrich	pass-by report	HTTP (POST)	REST-based
PassbyEnricher	VRDB Service	get vehicle info	LicensePlate/UIC number	HTTP (POST)	REST-based
PassbyEnricher	Passby Queue	enqueue	pass-by report	AMQP publish	REST-based
PassbyQueue	PassbyStore	store	pass-by report	AMQP subscribe	REST-based

TABLE VI: Classifier interface

From	To	Operation	Scope / Data Exchanged	Technology	
				Transport Layer / Protocol	Data Format
Passby Queue	Emission Classifier	Request classification	pass-by report	AMQP subscribe	REST-based
Emission Classifier	SoundClassificationModel	classify	in: pass-by report out: ClassificationSound	HTTP (POST)	REST-based
Emission Classifier	ExhaustClassificationModel	classify	in: pass-by report out: ClassificationExhaust	HTTP (POST)	REST-based
Emission Classifier	Classification Queue	enqueue	Classification report	AMQP publish	REST-based

TABLE VII: Classification report handling interface

From	To	Operation	Scope / Data Exchanged	Technology	
				Transport Layer / Protocol	Data Format
Classification Queue	Classification Notifier	trigger	Classification report	AMQP subscribe	REST-based
Classification Queue	Classification Store	store	Classification report	AMQP subscribe	REST-based

TABLE VIII: Classification report notifying interface

From	To	Operation	Scope / Data Exchanged	Technology	
				Transport Layer / Protocol	Data Format
Classification Notifier	Classification Dialog System	notify	Classification report	HTTP (POST)	REST-based

TABLE IX: Querying interface

From	To	Operation	Scope / Data Exchanged	Technology	
				Transport Layer / Protocol	Data Format
Analytics	Querying interface	query	In: query request, access token Out: a collection of PassbyReport and/or collection of Classification Report	HTTP (POST)	REST-based

7) *Receive incoming Health messages*: The Collector module also receives health messages from different sensors. Each sensor periodically sends messages indicating its current state, whether healthy or degraded.

8) *Additional functionality and design considerations*: To ensure scalability, the Data Hub is designed as a collection of loosely coupled modules capable of interacting through simple protocols like hypertext transfer protocol (HTTP)³ and advanced message queuing protocol (AMQP)⁴. This design allows individual modules to be containerized using Docker⁵ and deployed through container orchestration platforms like Kubernetes⁶.

C. Interfaces

This sub-section elucidates the principal interfaces utilized in the Nautilus platform. The underlying data model and interfaces shared by all modules are described using the OpenAPI⁷ specification.

1) *Sensors to Synchronizer*: This sub-section elaborates on the interfaces between the Synchronizer and the sensors/systems responsible for gathering data related to vehicle passages. The Synchronizer interfaces aim to standardize communication technologies, minimizing operational costs. Details regarding these interfaces are presented in Table III, including interface identification, communicating entities, and a brief description of the scope and data exchanged. The interface naming convention follows the pattern: “3-letter abbreviation sender system” - “3-letter abbreviation receiver system” - “Interface identifier” (e.g., SYN-DAH-1). Two different technologies are employed for data exchange. The sensors and systems at the measurement site employ the ZeroMQ message transport protocol (ZMQ)⁸, while the central system components utilize a REST⁹-based data format over HTTP.

2) *Sensor Fusion*: In the sensor fusion process, the Synchronizer receives image triggers from the roadside station and subsequently requests weather and noise measurement data from the corresponding stations and modules. The VRDB-Service is queried for vehicle registration information based on the license plate, which is then added to the road pass-by report upon receiving the image result (automatic number plate recognition (ANPR)). The Exhaust and V2X modules independently provide their data, triggered by their respective systems. Once all data is fused and added to the report, or a sensor timeout occurs, the road pass-by report is sent to the Data Hub.

3) *Synchronizer to Data Hub*: The interface from the Synchronizer to the Data Hub is specified using the OpenAPI document. Table IV provides an overview of the Synchronizer and Data Hub interface. Once the Synchronizer synchronizes the sensor data for a pass-by on-site, all relevant pass-by data is posted to the Data Hub as a JavaScript object notation

(JSON)¹⁰ document. The Data Hub’s Collector API exposes POST interfaces for vehicle pass-bys, and a generic interface for sending media files related to pass-bys. Additionally, an interface is available for sensors to send their health information.

4) *Pass-by Report Handling*: Table V presents the pass-by report handling interface. Pass-by reports are stored in a PostgreSQL¹¹ database, which supports JSON format. This allows querying of pass-by reports based on their individual attributes.

5) *Interaction with Classifier*: A Classifier interface is outlined in Table VI. The Emission Classifier module manages all processes related to emission classification. It receives new pass-bys from the Passby Queue and autonomously initiates the sound and exhaust classification processes. Once completed, the classifications are gathered, and a classification report is generated and sent to the Classification Queue.

6) *Classification Report Handling*: The classification report handling interface is provided in Table VII. When a new classification report becomes available in the classification queue, it is processed by the classification notifier. Similar to pass-by reports, classifications are stored in a PostgreSQL database, enabling searching based on individual classification characteristics.

7) *Data Hub to the CDS*: The Classification Notifier informs the CDS about new classifications. The classification report handling interface is presented in Table VIII.

8) *Data Hub and Analytics Interaction*: The Query Interface module facilitates the receipt of pass-by and classification reports from the Data Hub. It utilizes GraphQL¹² to define and respond to queries flexibly. The Query Interface directly retrieves data from the PostgreSQL databases. Table IX provides an overview of the Query Interface module.

IV. NOISE SOURCE DETECTION AND LOCALIZATION USING MICROPHONE ARRAY IN DENSE TRAFFIC STREAMS

In this section, we present an algorithm designed to address the accurate identification and localization of high-emitting vehicles within dense traffic streams. Our approach utilizes a microphone array comprising two side microphones per lane strategically placed in close proximity to the vehicles. The primary objective is to leverage these microphones to detect and locate vehicles emitting high levels of noise. The algorithm, referred to as “Noise Source Detection and Localization using Microphone Array in Dense Traffic Streams,” is outlined in Algorithm 1. The algorithm begins by employing a beamforming technique to detect the primary sound source and estimate the position of the vehicle [33]. Specifically, the side microphones, positioned at a height with a distance of approximately 20 cm in the driving direction, play a key role in localizing the vehicles. The determination of the source direction is derived from the signals captured by the microphones. These microphones are positioned along a

³<https://developer.mozilla.org/en-US/docs/Web/HTTP>

⁴<https://www.amqp.org/>

⁵<https://www.docker.com/>

⁶<https://kubernetes.io/>

⁷<https://www.openapis.org/>

⁸<https://rfc.zeromq.org/spec/23/>

⁹<https://www.ibm.com/cloud/learn/rest-apis>

¹⁰<https://www.json.org/json-en.html>

¹¹<https://www.postgresql.org/>

¹²<https://graphql.org/>

Algorithm 1: Noise Source Detection and Localization using Microphone Array in Dense Traffic Streams

Input : Microphone data: A sequence of audio samples collected from the microphone array

Output: Corrected peak sound pressure level: A numerical value representing the corrected peak sound pressure level

Start**Initialization:**

- Initialize the microphone array and configure the beamforming algorithm;

Data Collection:

- Collect audio data from the microphone array and store it in the variable `audioData`;

Position Estimation:

- Estimate the position of the vehicle using the beamforming algorithm on `audioData`;
- Store the estimated position in the variable `estimatedPosition`;

Pass-by Trajectory Calculation:

- Calculate the pass-by trajectory angle based on the `estimatedPosition`;
- Store the pass-by trajectory angle in the variable `passByTrajectory`;

Noise Interference Removal:

- Obtain a list of `surroundingPeakLevels`;
- for each** `surroundingPeakLevel` **in** `surroundingPeakLevels` **do**
- if the peak of interest value is at least 6 decibels below the smallest value in-between peak of interest and**
- `surroundingPeakLevel` **then**
- Retrieve the model curve corresponding to the `vehicleSpeedCategory` from the pre-trained dataset;
 - Overlay the neighbouring peak with the model curve for the specific vehicle speed;
 - Determine the contribution of the model curve at the peak of interest;
 - Subtract the contribution from the `surroundingPeakLevel` to obtain the corrected peak of interest level;
- return** `correctedPeakLevel`;

end**end****Stop**

the summation, as elaborated in Equation (1).

$$c_l = \begin{bmatrix} \sum_{n=1}^N s_{m_0,l}(n + k_{-(N-1)}) \cdot s_{m_1,l}^*(n) \\ \vdots \\ \sum_{n=1}^N s_{m_0,l}(n + k_{(N-1)}) \cdot s_{m_1,l}^*(n) \end{bmatrix} \quad (1)$$

In Equation (1), k represents the time shift between two signals, and n pertains to the running index inside the specific frame of the microphone, $n = 1, 2, \dots, N$, and $k = (-(N-1), \dots, (N-1))$. Now, the algorithm performs the maximization of c_l in Equation (1) over all the values of k and applies the following transformation to obtain the direction of the sound source as the horizontal angle:

$$\alpha_l = \arcsin\left(\frac{d_\tau}{d_{mic}}\right), l = 1, 2, \dots, L \quad (2)$$

where $d_\tau = \frac{1}{f_{s_l}} \cdot c_0$, $c_0 = 343$ m/s is the speed of sound, f_{s_l} is the “sampling frequency” denoting how many frames are in one second, d_{mic} is the distance between the two microphones.

In Equation (2), this angle α_l of the source signal resembles the `arctan()` function, spanning a range from -90° to 90° . The algorithm estimates the position by processing this angle, commonly known as the “pass-by trajectory”. In this context, an angle of 0° signifies the position directly in front of the array, while angles of -90° and 90° represent the scenario where the vehicle is located at a far-away distance. However, an inherent challenge arises due to the potential interference caused by nearby vehicles, which can impact the accurate measurement of noise levels. To address this issue, our algorithm introduces a method called “peak level correction” [34]. This method adopts a data-driven approach to correct the measured noise levels of individual vehicles by considering the contributions of nearby vehicles. The algorithm collects data from single pass-bys and generates characteristic mean level-time curves corresponding to different vehicle speed categories to achieve this. These curves serve as models to estimate nearby vehicles’ contribution and correct the measured noise levels accordingly. Let’s denote the model curve for a specific vehicle speed category as $M(v)$, where v represents the speed category of the vehicle (e.g., 30 km/h, 50 km/h, 75 km/h) etc.

The peak level correction method is applied by examining the behaviour of the noise level towards surrounding peaks. Let P be the set of detected peaks and p_i represents the i -th peak in P . Initially, the algorithm checks if the noise level exhibits a decrease of at least 6 decibels (dB) from the peak of interest p_i towards the minimum in between p_i and any surrounding peak p_j . Let $\Delta S(p_i, p_j)$ represent the difference in sound level between peaks p_i and the corresponding minimum of the pair (p_i, p_j) , where p_j is a surrounding peak.

$$\Delta S(p_i, p_j) \geq 6 \text{ dB} \quad \forall p_j \quad (3)$$

If such a decrease is observed as represented in Equation (3), it suggests that the nearby vehicles’ contribution is insignificant, and no further correction is necessary. However, when the decrease is below the specified threshold of 6 dB, the algorithm overlays the neighbouring peak p_j with the corresponding model curve based on the specific vehicle’s speed.

horizontal array that is designed to encompass the horizontal plane. Let $s_{m_0,l}$ represent the measured sound signal of the first microphone in the l^{th} frame, $l = 1, 2, \dots, L$, and $s_{m_1,l}^*$ represent the complex conjugate of the measured sound signal of the second microphone in the l^{th} frame, $l = 1, 2, \dots, L$. Now, the cross-correlation of the l^{th} frame is computed by

Let $O_j(p_i, M(v))$ represent the overlaid curve of the model curve $M(v)$ on peak p_j surrounding the peak of interest p_i . To calculate the contribution of the model curve $M(v)$ at peak p_i , we find the difference between the overlaid curve $O_j(p_i, M(v))$ and the actual sound level curve $s(t_i)$ at the peak time t_i of p_i . Let $C_j(p_i, M(v))$ represent the contribution of the overlaid curve $O_j(p_i, M(v))$ at peak p_i . The corrected sound level at peak p_i , denoted as $C_{S(p_i)}$, is obtained by subtracting the contribution $C_j(p_i, M(v))$ from the sound level $s(t_i)$ at peak time t_i . Hence, the correction calculation can be expressed as:

$$C_{S(p_i)} = s(t_i) - \sum_j C_j(p_i, M(v)) \quad (4)$$

As shown in Equation (4), this correction process is performed for all surrounding peaks contributing to the disturbance, resulting in a corrected maximum sound pressure level in identifying high-emitting vehicles within dense traffic streams. The proposed algorithm has been applied successfully during our testing in Rotterdam and Teesdorf (explained in Section VI).

V. AI-ENABLED CLASSIFICATION MODEL IN THE DATA HUB

The classification of vehicles as high emitters or not is achieved using an AI-enabled model. This model tackles a supervised learning problem, where each vehicle measurement must be labelled during training. However, such labels are not readily available in the data configuration. Moreover, existing regulations do not provide a straightforward assessment of excessive noise based on a single pass-by measurement. A sound expectation model (SEM) has been developed to overcome this, leveraging available data and making certain assumptions to predict the expected noise level for each vehicle pass-by.

The fundamental principle underlying the SEM is characterized as follows: through the utilization of measured parameters encompassing noise levels, vehicle velocity, and engine speed during both cruising (crs) and acceleration (acc) phases, three distinct constituents are computed. These components encompass the expected tire-road surface noise level ($L_{TR.EXP}$), the expected powertrain noise level ($L_{PT.EXP}$), and the expected dynamic noise level ($L_{DYN.EXP}$).

Expected Tire Road Surface Noise Level: This component pertains to the noise generated as a result of the interaction between the vehicle's tires and the road surface. It considers factors such as the speed of the vehicle and the characteristics of the road, contributing to the estimation of the noise produced by the tire-road interface.

Expected Powertrain Noise Level: This component relates to the noise that originates from the powertrain of the vehicle, including the engine and other relevant mechanical components. It takes into account the engine speed and potentially other powertrain parameters to predict the noise produced by these elements.

Expected Dynamic Noise Level: This component captures the dynamic noise variations that occur due to changes in the vehicle's operational conditions, such as acceleration. It accounts for the dynamic aspects of the vehicle's movement and how they influence noise generation.

The collective interplay of these three facets results in an overall projected noise level. Of particular significance within the SEM framework are two pivotal components contributing to generating vehicle-specific outcomes. Primarily, the calculated parameters, as delineated, are uniquely tailored to each vehicle category and characterized by their own distinct parameter set. Secondly, a key aspect entails the incorporation of two discrete engine speed values: one relevant to a stable vehicular velocity scenario and another corresponding to acceleration conditions. This dichotomy arises due to the fact that the tire-road surface sound component is ascertained under constant vehicle speed conditions, while the powertrain sound component is derived during acceleration episodes.

The determination of the expected tire rolling sound component, denoted as $L_{TR.EXP}$, is contingent upon the attained vehicle speed (v_{meas}) during measurement. Specifically, for vehicle speeds equal to or below a reference velocity (v_{ref}), $L_{TR.EXP}^-$ is evaluated using the formula:

$$L_{TR.EXP}^- = \theta_{TR.LO} \times \log\left(\frac{v_{meas}}{v_{ref}}\right) + L_{ref.TR} \quad (5)$$

where $v_{ref} = 50$ km/h, $L_{ref.TR} = 10 \times \log(x \times 10^{0.1 \times L_{meas.crs}})$, $L_{meas.crs}$ is measured sound pressure level, x refers to a parameter applicable to tire rolling sound energy fraction of $L_{meas.crs}$, and $\theta_{TR.LO}$ is low tire rolling sound slope parameter and is taken in accordance with the relevant vehicle characteristics.

For vehicle speeds exceeding V_{ref} , the $L_{TR.EXP}^+$ is computed as:

$$L_{TR.EXP}^+ = \theta_{TR.HI} \times \log\left(\frac{v_{meas}}{v_{ref}}\right) + L_{ref.TR} \quad (6)$$

where $\theta_{TR.HI}$ is high tire rolling sound slope parameter.

The projected powertrain base mechanical sound component, denoted as $L_{PT.EXP}$, hinges upon the attained engine speed (η_{meas}) during measurement. Specifically, for engine speeds equal to or below a critical engine speed ($\eta_{meas.crs}$), $L_{PT.EXP}^-$ is computed as follows:

$$L_{PT.EXP}^- = \theta_{PT.LO} \times \log\left(\frac{\eta_{meas} + \eta_{SHIFT.PT}}{\eta_{meas.crs} + \eta_{SHIFT.PT}}\right) + L_{ref.PT} \quad (7)$$

where $L_{ref.PT} = 10 \times \log((1-x) \times 10^{0.1 \times L_{meas.crs}})$, $\theta_{PT.LO}$ is low powertrain sound slope parameter and $\eta_{SHIFT.PT}$ is the form factor for the logarithm function of the mechanical sound model.

Similarly, for engine speeds exceeding $\eta_{meas.crs}$, $L_{PT.EXP}^+$ is computed as follows:

$$L_{PT.EXP}^+ = \theta_{PT.HI} \times \log\left(\frac{\eta_{meas} + \eta_{SHIFT.PT}}{\eta_{meas.crs} + \eta_{SHIFT.PT}}\right) + L_{ref.PT} \quad (8)$$

where $\theta_{PT.HI}$ is high powertrain sound slope parameter.

The expected base dynamic sound component $L_{DYN.EXP}$ is calculated dependent on the achieved engine speed η_{meas}

during the measurement. For engine speeds up to and inclusive $\eta_{meas,acc}$, $L_{DYN_EXP}^-$ is calculated by:

$$L_{DYN_EXP}^- = \theta_{DYN_LO} \times \log \left(\frac{\eta_{meas} + \eta_{SHIFT_DYN}}{\eta_{meas,acc} + \eta_{SHIFT_DYN}} \right) + L_{ref_DYN} \quad (9)$$

where $L_{ref_DYN} = 10 \times \log((1 - x) \times 10^{0.1 \times L_{meas,acc}})$, θ_{DYN_LO} is low dynamic sound slope parameter and η_{SHIFT_DYN} is the form factor for the logarithm function of the dynamic sound model.

Similarly, for engine speeds exceeding $\eta_{meas,acc}$, $L_{DYN_EXP}^+$ is computed as follows:

$$L_{DYN_EXP}^+ = \theta_{DYN_HI} \times \log \left(\frac{\eta_{meas} + \eta_{SHIFT_DYN}}{\eta_{meas,acc} + \eta_{SHIFT_DYN}} \right) + L_{ref_DYN} \quad (10)$$

where θ_{DYN_HI} is high dynamic sound slope parameter.

The dynamic delta sound component, denoted as ΔL_{DYN_EXP} , is calculated through the equation:

$$\Delta L_{DYN_EXP} = \Delta L_{DYN} + 0.3 \quad (11)$$

where $\Delta L_{DYN} = 10$ dB.

The outcome of each component's calculation contributes to determining the expected sound level for a particular measurement. This anticipated sound level is subsequently compared to the maximum measured sound pressure level. The methodology employed in this sound expectation model draws inspiration from the formulas utilized in the new draft-type approval test for vehicle noise under real driving conditions, part of the Additional Sound Emission Provisions (ASEP) in UNECE Regulation 51 [35]. To establish a reference noise level for "normal" vehicles, we adopt an approach based on the vehicle's speed and acceleration. We aim to determine the reference noise level, denoted as $L_{Amax,ref}$, by fitting a function to the data. The function is defined by Equation (12):

$$L_{Amax,ref}(v, a) = c_0 + c_v \cdot v + c_a \cdot a \quad (12)$$

where v represents the vehicle speed in km/h, a represents the acceleration in m/s^2 , and c_0 , c_v , and c_a are coefficients specific to each vehicle category (such as M1, N1, etc.). By finding the appropriate values for these coefficients, we can establish a reliable reference noise level that accounts for the vehicle's characteristics and contribute to the accurate identification and categorization of vehicles based on their noise emissions. This computational scheme produced a calculation model based on laws governing vehicle noise as a function of vehicle characteristics and driving parameters (speed, acceleration and engine speed), including tyre/road and propulsion noise separately. Each pass-by is given a label by comparing the expected level with the actual measured sound level, i.e. if the difference between the measured and expected sound level is more than 8 dB(A), the pass-by is considered a high emitter. Hence, the available data can then be used to create and train a supervised AI-enabled classification model using this labelling of high emitters. Please refer to [15] for

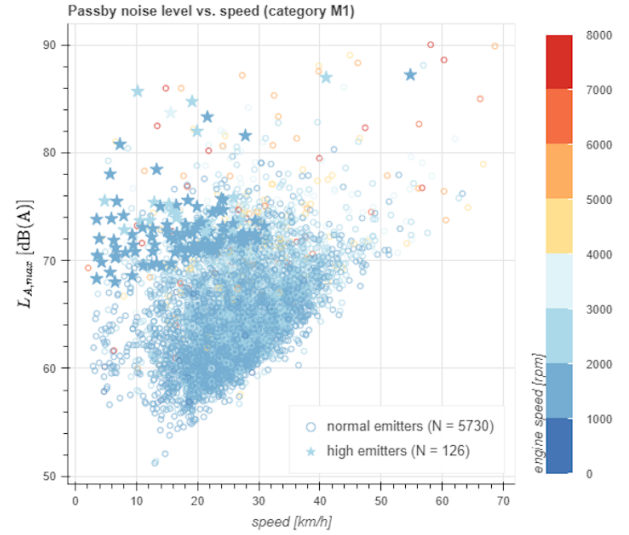


Fig. 3: Maximum noise level ($L_{A,max}$) vs. speed for individual vehicle pass-bys. Colors indicate engine speed (rpm). Vehicles classified as high emitters are indicated with stars

more details on the sound expectation model used for our NEMO system.

In order to optimize the performance of the AI-enabled classification model, data preprocessing and filtering techniques were employed to separate relevant data from irrelevant data. After evaluating eleven different AI models and considering their scores, advantages, and disadvantages in terms of accuracy and computation time, it was decided to proceed with a neural network, specifically a Multi-layer Perceptron classifier [36]) as an AI model for classification. This was done over continuous testing of AI models with the data. More details on the evaluation of different classification models and selecting the AI-enabled classification model can be found on [15]. The TensorFlow API¹³ was utilized to develop the final model, which was rigorously assessed using separate training and test data to mitigate overfitting. Hyperparameter tuning was also conducted to further reduce the risk of overfitting. The resulting AI-enabled classification model was deployed in the Nautilus cloud platform, demonstrating accurate classification of high noise emitters. It should be noted that this model specifically addresses high noise emitters and does not encompass exhaust emissions. Furthermore, it is site-specific and can be customized based on regulations governing vehicle noise, pavement type, the influence of nearby reflecting objects, and exhaust emissions.

Fig. 3 illustrates the outcomes of vehicle classification using AI algorithms based on measurements conducted in Rotterdam. The findings in this figure unveil a noteworthy trend: vehicles tend to be categorized as illicit high emitters when operating at reduced and lower engine speeds. This occurrence can be attributed to the type approval system, which grants vehicles the leeway to generate amplified noise levels at elevated engine speeds. However, if the objective

¹³<https://www.tensorflow.org/>

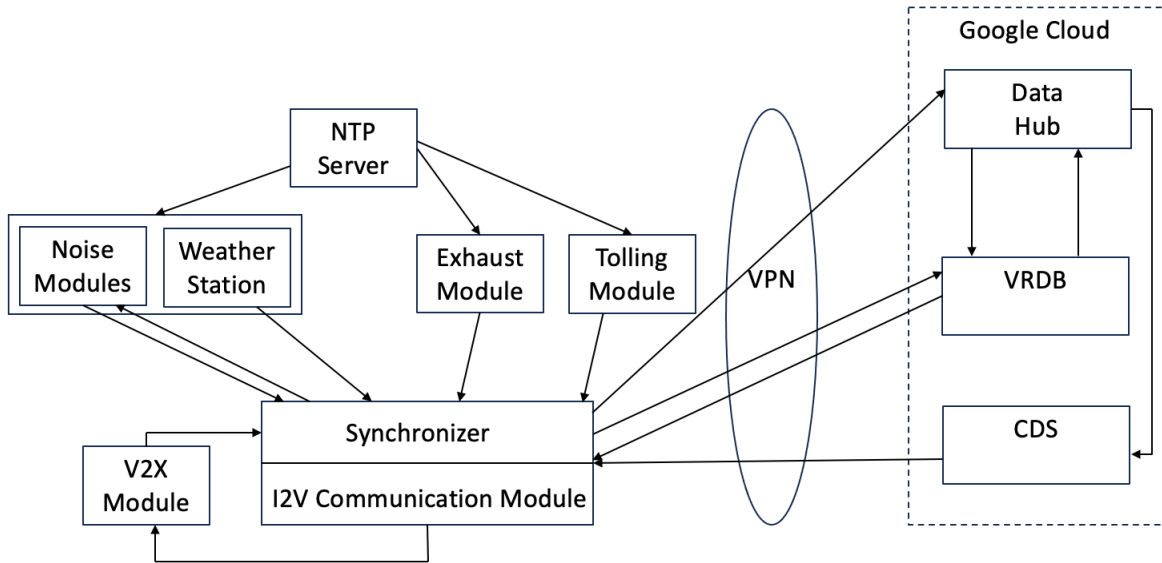


Fig. 4: Overview of the deployment of the NEMO Nautilus platform with different modules at Teesdorf

is to evaluate and subsequently modify driver behaviour, an alternative classification methodology can be employed. This approach not only recognizes vehicles as high noise producers due to aggressive driving styles but also endeavours to influence drivers towards adopting a more considerate approach on the road.

VI. NEMO SYSTEM DEPLOYMENT & TESTING

In order to test the NEMO system to identify the high-emitters, the system was successfully deployed in Rotterdam, Florence and Teesdorf. Owing to space constraints and for the sake of brevity, we only explain here the deployment of the NEMO system in Teesdorf. However, the deployment of the NEMO system will be more or less the same in other testing locations as well, subject to the adjustments of placement of cameras, microphones and installations of different sensors.

The NEMO Nautilus platform was deployed partly on-site and partly in the Google cloud¹⁴. The measurement-specific parts, such as the sensor-communication modules and Synchronizer, are deployed at the sensing site. These components need to be deployed on-site to ensure low-latency communication. The Data Hub is also deployed on the Google cloud. The VRDB service that interfaces between the Synchronizer and the vehicle registry databases of various authorities are also deployed as a cloud solution. A simplified overview of the deployment for the Teesdorf (Austria) test setup with different modules is shown in Fig. 4.

The Synchronizer services are deployed on a dedicated computer system on the measurement site. The Data Hub module (including the VRDBService module) is a collection of Linux Docker containers orchestrated via Kubernetes. The communication between the on-site and cloud components within Nautilus is done via a site-to-site virtual private network (VPN). This adds a layer of security and obviates the need for an extra layer of authentication and authorization between

different modules. The Analytics module provides access to the data inside the Data Hub. The Analytics module handles the authentication and authorization of users, and the Data Hub trusts the Analytics module. An NTP server is made available for time synchronization between on-site sensors and systems.

A. Teesdorf Hardware Setup

A hardware setup illustration and a Teesdorf test site setup for testing the NEMO system are shown in Fig. 5. The figure clearly shows the planned hardware setup that illustrates the required equipment and rough location. Next to hardware equipment, the figure shows configured trigger lines for vehicle detection and the zone for V2X vehicle data readout. It also represents the NEMO installation integrated into an enforcement station for a highway installation. The station spans three lanes, two driving lanes and one hard shoulder. The hard shoulder is not subject to testing and is not fully equipped with NEMO or tolling sensors. For safety reasons, the road is delimited with concrete jersey barriers. To support motorcycle use cases, rear cameras are needed to read the license plates. The equipment installed at the Teesdorf test site for testing the NEMO system is outlined in Table X.

B. NEMO System Testing

Several tests were executed at the Teesdorf test site in Austria to check the performance of our NEMO system in identifying high emitters and communicating the classification message in real time. For instance, tests were performed for a road pass-by car with a vehicle speed of 70 km/h and 50 km/h honking. In the first test case, the passenger car was equipped with a V2X OBU and passed the test gantry at a speed of 70 km/h, where we tested the vehicle for high noise and high exhaust emission. The test was done to check if our NEMO system could detect and perform the correct classification for the vehicle. The test case is considered passed as a V2X message with a resultId of 3 was received. Please

¹⁴<https://cloud.google.com/>

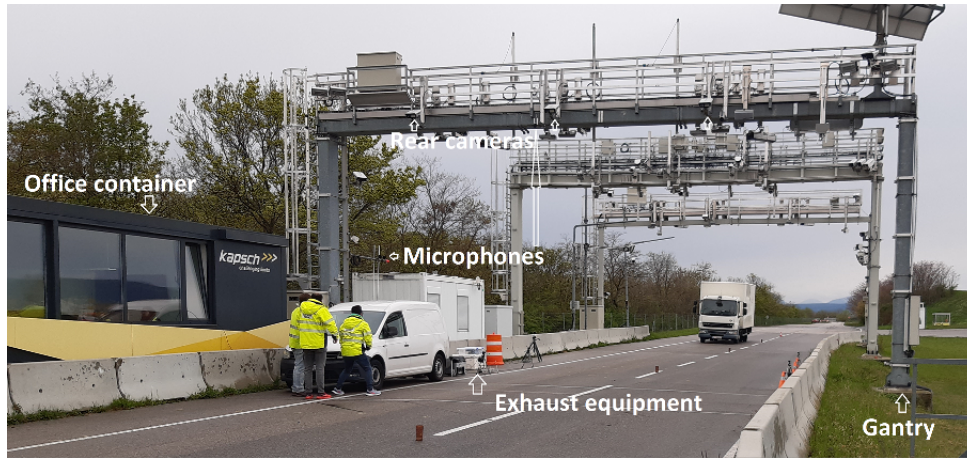


Fig. 5: NEMO system hardware and Teesdorf test site setup

TABLE X: Teesdorf hardware setup list

Equipment	Abbreviation	Quantity	Description	Needed for
Exhaust Sensor	E1	1	Exhaust measuring unit and reflector unit for all lanes.	ExhaustModule
RIS Module	V2X1	1	Module communicating with V2X OBUs for all lanes.	V2XModule
DSRC Transponder	DSRC1/2	2	DSRC module communicating with DSRC OBUs for specific lane.	TollingModule
Overview Camera Front and Rear	OC1R/F	2	Overview camera capturing vehicle entering and leaving the measurement site for all lanes.	TollingModule
Vehicle Classification Sensor	nVDC1/2	2	Sensor capturing vehicle passage throughout the measurement site and classifying vehicles for specific lane.	TollingModule
Front Camera	FC0/1/2	3	Front camera reading license plate number for specific lane.	TollingModule
Rear Camera	RC0/1/2	3	Rear camera reading license plate number for specific lane.	TollingModule
Top Noise Sensor	N1/2	2	Top mounted microphone collecting noise from specific lane.	NoiseModule
Side Noise Sensor	NOL/R	2	Side mounted microphone collecting noise from all lanes.	NoiseModule
Weather Sensor	W	1	Weather station measuring weather conditions for the measurement site.	WeatherStation
Noise Cabinet	-	1	Cabinet containing processing units for noise measurement.	NoiseModule
RSS Cabinet	-	1	Cabinet containing processing units for data collection.	TollingModule Synchronizer I2V- CommunicationModule

refer to Table XI for different resultId and their corresponding descriptions. The resultId ‘3’ was part of the solution space and indicated a high noise and high exhaust emission. This was correctly reflected by the V2X OBU screen, as shown in Fig. 6(a). In the second test case, the passenger car with a V2X OBU passed the test gantry with a 50 km/h speed. The car accelerated to the target speed and rolled through the gantry. Thus, no engine exhaust emissions nor engine noise emissions were generated. Only rolling noise was generated. To generate additional noise, honking throughout the passage was performed. The expected result was a high noise emitter message. The test case is considered passed as a V2X message with a resultId of 1 was received, matching the expectation. The resultId ‘1’ was also part of the solution space and indicated a high noise. The V2X OBU screen correctly reflected this, as shown in Fig. 6(b). Similarly, several other test cases were executed with passenger cars and motorcycles under different driving conditions to test the NEMO system for correctly detecting and identifying high emitters (both in terms of noise and exhaust emissions) and their corresponding classification data were recorded in the Data Hub for further analysis. The pilot testing of the NEMO system at Teesdorf and Rotterdam successfully detected and identified the high emitters in real time under different driving conditions. Also,

real-time classification messages from the CDS system were tested and are explained in the next section.

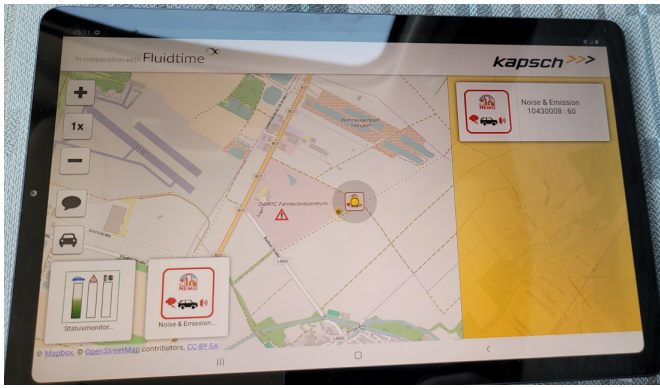
VII. CLASSIFICATION DIALOG SYSTEM (CDS)

The main aim of the CDS is to inform the results of the pass-by classification to the vehicle owner or directly to the driver in real time. The communication’s ultimate goal, whether it be purely informative or regulatory (such as a message restricting entrance to a LEZ), is a political decision and is therefore outside the scope of this paper. The appropriate traffic regulating agencies and different stakeholders may use these developments to put notification systems in place for any purpose they see necessary.

A. General Considerations for CDS

The CDS system aims to promptly notify vehicle owners of real-time pass-by classification results. To achieve this, a CDS server based on NodeJS¹⁵ has been deployed on the Google Kubernetes Engine (GKE). When the vehicle classification results reach the CDS classification endpoint, it triggers an emitter message for V2X OBU communication. Additionally, a separate communication channel has been established for mobile applications, email, and mobile messages to receive

¹⁵<https://nodejs.org/en/>



(a) Road pass-by car with high noise and high exhaust emission



(b) Road pass-by car with high noise only

Fig. 6: Testing and identification of different types of high emitters in real-time using NEMO system**TABLE XI:** resultId and their corresponding description

resultId	Description
0	Noise classification is low , and Exhaust classification is low
1	Noise classification is high , and Exhaust classification is low
2	Noise classification is low , and Exhaust classification is high
3	Noise classification is high , and Exhaust classification is high

the classification and emitter messages from the CDS in real-time.

The CDS system also considers tolling fee calculations based on vehicle emission classifications, which are communicated via email and mobile messages. The following conditions serve as an example for tolling fee calculation and communication in real-time:

- 1) If the vehicle is classified as a High Emitter for both noise and exhaust emissions, then CDS will calculate tolling fees of 3€.
- 2) If the vehicle is classified as a Low Emitter for noise and a High Emitter for exhaust emission, then CDS will calculate tolling fees of 2€.
- 3) If the vehicle is classified as a High Emitter for noise and a Low Emitter for exhaust emission, then CDS will calculate tolling fees of 1€.
- 4) If the vehicle is classified as a Low Emitter for both noise and exhaust emissions, then CDS will calculate tolling fees of 0€.

For V2X OBU communication, the CDS sends the emitter message containing the corresponding resultId as soon as classification messages are received. The resultId and their descriptions implemented in the CDS for the Teesdorf test site are listed in Table XI.

B. I2V Communication

The NEMO classification outcome is communicated directly to the vehicle through the I2V communication channel. The CDS determines the feasibility of I2V communication based on the presence of a V2X OBU passage indicated in the road pass-by report. When the I2V communication channel is available, the CDS generates the emitterMessage, which includes an identifier and the corresponding resultId as specified in

Table XI. The identifier is a temporary V2X OBU ID extracted from the road pass-by report being classified.

The CDS identifies the target roadside station for delivering the emitterMessage and transmits it to the I2V communication module. From there, the emitterMessage is passed to the V2X module, which in turn sends it to the V2X OBU. The V2X OBU, upon receiving the emitterMessage, searches for customized pictograms and text associated with the result code and presents the classification outcome to the driver through a display. To display the message correctly, the V2X OBU relies on the resultId provided. Fig. 6 illustrates a successful test of the I2V communication from the CDS at the Teesdorf test site, demonstrating the practical implementation and functionality of the system.

C. Email and SMS Communication Channel

Email and mobile SMS are widely recognized and commonly used digital communication methods. In our system, vehicle owners receive timely updates via email and SMS, including relevant vehicle information, tolling fees, and classification results from the CDS. To facilitate this communication, we have implemented an email server using Nodemailer¹⁶ in NodeJS, enabling the successful delivery of detailed information from the CDS through emails. Additionally, the CDS NodeJS server utilizes the Twilio¹⁷ API to send real-time notifications via mobile SMS to vehicle owners as soon as classification results are received.

The successful testing of the email and real-time mobile message (SMS) communication path at the Teesdorf test site demonstrates the effective functioning of these communication channels. When classification data reaches the CDS classification endpoint, an email is promptly sent to the vehicle owner, and a near real-time SMS notification is also dispatched from the CDS. This ensures that vehicle owners are promptly informed of the relevant information related to their vehicles.

D. Mobile Application

A mobile application specifically designed to relay classification results, particularly for vehicles identified as High

¹⁶<https://nodemailer.com/about/>

¹⁷<https://www.twilio.com/>

Emitter, has been developed. The mobile app notifies the vehicle owner when their vehicle has been classified as a high emitter. Consequently, the owner will be informed that entering certain zones is prohibited. Additionally, the owner will be prompted to inspect their vehicle for any malfunctioning components, such as through a periodical technical inspection (PTI) check.

Considering the legal restrictions on reading phone messages while driving, the mobile app utilizes mobile messages as a non-real-time communication channel between the vehicle owner and the driver. This ensures that important information can be conveyed without compromising safety regulations.

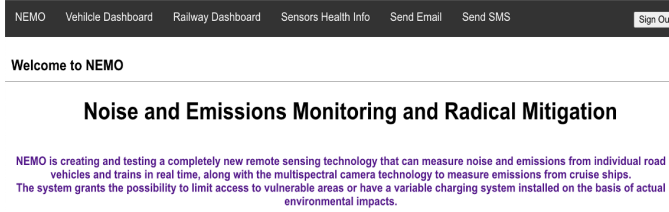


Fig. 7: NEMO dashboard

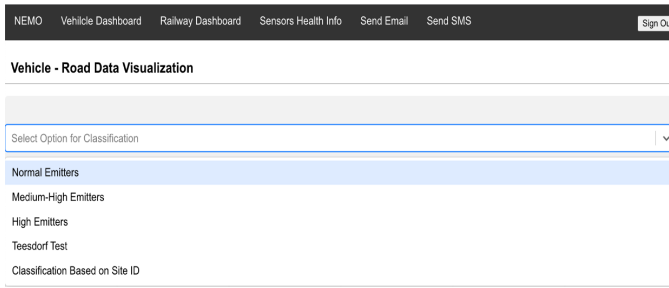


Fig. 8: Analytics module with different options for the vehicle dashboard

Vehicle ID	LMax Value	Speed	Type of Fuel	Sound Classification	Vehicle Model	Date & Time
1f67ce13-690d-48...	82.59	58.4	petrol	normal	MAZDA	2022-02-22T04:02...
9cc0adfe-a1b1-4b...	72.25	25.1	hybrid	normal	TOYOTA	2022-02-22T04:04...
14a35c55-c5d8-46...	87	33.3	diesel	high	MERCEDES-BENZ	2022-02-22T04:05...
e9b773ba-b297-4c...	70.94	23.7	diesel	normal	MERCEDES-BENZ	2022-02-22T04:06...
d9c3761b-9538-4...	80.16	53.8	diesel	normal	FORD	2022-02-22T04:08...
a84c2d46-7702-4...	83.85	41.7	noEntry	normal	SORIBERICA	2022-02-22T04:12...
a4ec67e1-e8ed-4...	79.89	52.3	petrol	normal	NISSAN	2022-02-22T04:15...
fa9f131a-1005-41f...	84.16	59.1	petrol	normal	VOLKSWAGEN	2022-02-22T04:15...
dee79f52-b164-4e...	81.23	65.4	diesel	normal	MERCEDES-BENZ	2022-02-22T04:19...
82f8080c-8ea4-48...	85.55	47.3	diesel	medium	DAF	2022-02-22T04:19...

Fig. 9: Vehicle - Road data results (medium-high emitters) from the Rotterdam test-site

VIII. NEMO GRAPHICAL USER INTERFACE (GUI)

The Analytics component of the NEMO system serves as a powerful data analysis platform for both internal use and the infrastructure manager. It enables the comprehensive examination of recorded noise and emission levels stored in the Data Hub. This functionality proves valuable for local

Vehicle ID	CO2 Emission Value	Type of Fuel	Vehicle Model	Date & Time
		diesel		
10645fee-0ffa-4f...	113	diesel	Volkswagen	2022-04-26T17:09:43.363086
72a67353-9ae9-...	113	diesel	Volkswagen	2022-04-26T17:32:00.118908
b224e80b-1654-...	101	diesel	Ford	2022-04-27T13:09:05.433617
f664d5f6-905c-4...	113	diesel	Volkswagen	2022-04-27T13:09:08.749487
5dfda5f6-f593-45...	113	diesel	Volkswagen	2022-04-27T13:23:41.056801
181f04ed-e266-4...	113	diesel	Volkswagen	2022-04-27T13:24:38.979232
b2daf52c-acc1-4...	113	diesel	Volkswagen	2022-04-27T13:25:38.994785
3ea9f49b-d494-...	113	diesel	Volkswagen	2022-04-27T14:24:02.223064
a9067b34-af02-...	113	diesel	Volkswagen	2022-04-27T14:26:54.22174
769befe5-911f-4...	113	diesel	Volkswagen	2022-04-27T14:34:50.93511

Fig. 10: Vehicle - Road data results from the Teesdorf test-site

Vehicle ID	Site ID	Sound Classification	Exhaust Classification	Date & Time
	Teesdorf	high	high	
1363a6f917eb8e5beb5e0f...	Teesdorf	high	high	2022-05-02T12:11:28.013684
1363a6f917eb8e5beb5e0f...	Teesdorf	high	high	2022-05-02T12:12:08.035453
1363a6f917eb8e5beb5e0f...	Teesdorf	high	high	2022-05-02T12:19:04.109888
1363a6f917eb8e5beb5e0f...	Teesdorf	high	high	2022-05-02T12:19:36.118489
1363a6f917eb8e5beb5e0f...	Teesdorf	high	high	2022-05-02T12:46:10.345951
1363a6f917eb8e5beb5e0f...	Teesdorf	high	high	2022-05-02T12:46:46.365594
1363a6f917eb8e5beb5e0f...	Teesdorf	high	high	2022-05-02T12:47:28.378499
1363a6f917eb8e5beb5e0f...	Teesdorf	high	high	2022-05-02T13:50:57.881948
1363a6f917eb8e5beb5e0f...	Teesdorf	high	high	2022-05-02T14:00:33.948066
1363a6f917eb8e5beb5e0f...	Teesdorf	high	high	2022-05-02T14:01:11.953332

Fig. 11: Vehicle – classification results based on site id and high emitters

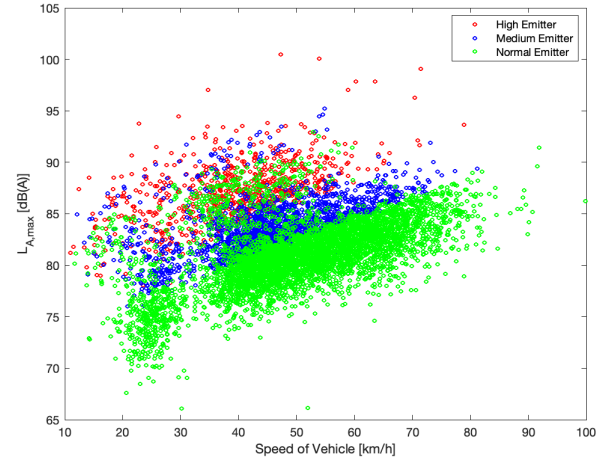


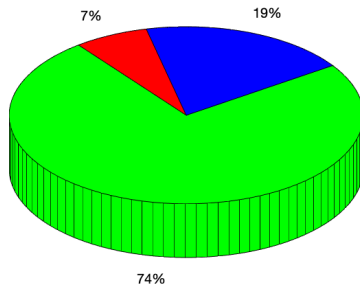
Fig. 12: Comparison of $L_{A,max}$ for normal-medium-high emitters against the speed of the vehicle at Rotterdam site

transport authorities and councils, as it allows them to establish appropriate thresholds for high-emitting vehicles.

In compliance with the European General Data Protection Regulations (GDPR), the NEMO system has implemented measures to safeguard privacy during both system implementation and Roadside Sound Disturbance (RSD) measurements. Close collaboration with privacy specialists from city councils and the NEMO project's privacy officer resulted in the following steps:

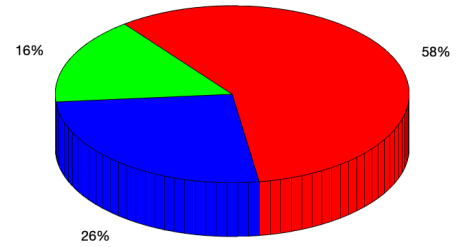
- The Automatic Number Plate Recognition (ANPR) de-

Normal Emitters Medium Emitters High Emitters



(a) Comparison of normal-medium-high emitters at Rotterdam

Normal Emitters Medium Emitters High Emitters



(b) Comparison of normal-medium-high emitters at Teesdorf

Fig. 13: Comparison of different classes of emitters

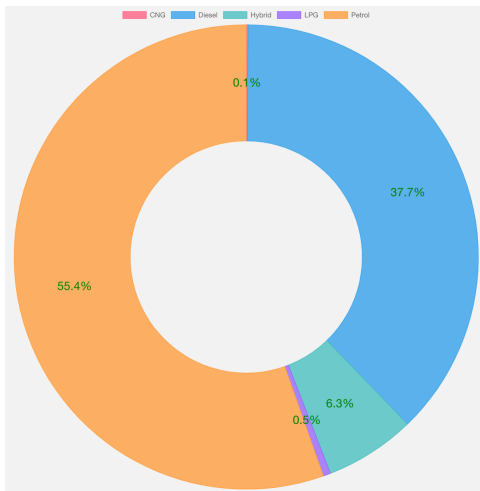


Fig. 14: Doughnut chart for comparison of high emitter vehicles based on fuel type at Rotterdam site

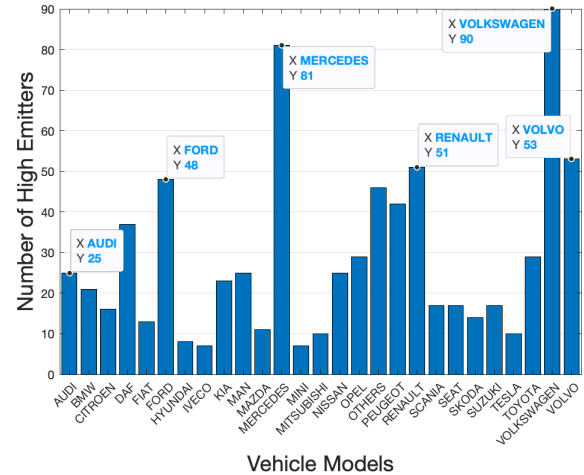


Fig. 15: Comparison of high emitter vehicles based on different vehicle models at the Rotterdam site

vice employs real-time text recognition on camera photos, ensuring that original video images are not retained. This approach prevents the identification of vehicle drivers or any other individuals.

- Audio recordings are subjected to direct evaluation using various metrics such as dB levels, spectra, and prominence. The original recordings are promptly deleted to prevent inadvertent capture of private audio information, including speech.

The NEMO system's NAUTILUS platform supports the analysis of noise and exhaust emissions from both road and rail vehicles. To access pass-by and classification data, the Analytics module verifies the credentials provided by the query interface. This interface, implemented using Hasura GraphQL¹⁸, requires

the retrieval of an initial token by the analytics module. The Data Hub employs OAuth 2.0¹⁹ authorization with bearer tokens, which are provided by auth0.com. An automated machine-to-machine authentication process facilitates secure communication between the Analytics module and the query interface.

For user access to the Analytics user interface, a dashboard with a login page and protected routes has been developed. Only authorized NEMO infrastructure managers or expert users are given credentials, such as a pre-defined username and password, to gain entry into the NEMO GUI dashboard.

¹⁸<https://hasura.io/>

¹⁹<https://oauth.net/2/>



Fig. 16: NEMO train site setup

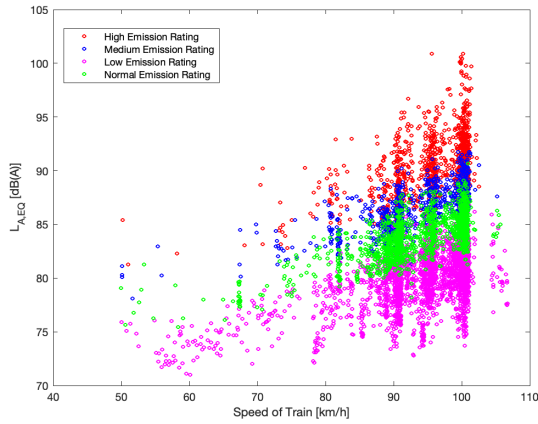


Fig. 17: Comparison of $L_{A, EQ}$ for normal-low-medium-high emitters against the speed of train

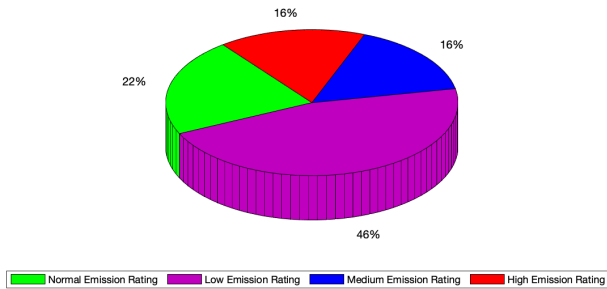


Fig. 18: 3D Pie-chart for comparison of normal-low-medium-high emission rating for train vehicles

A. Graphic User Interface for Road Infrastructure

As shown in Fig. 7, the NEMO expert user can click on the vehicle dashboard to view the results related to vehicle data after successfully logging in. The expert user can learn

the high noise and exhaust emission vehicle classification by using the querying interface with different vehicle attributes. The query's outcome will be returned, and the outcomes will be shown in the form of tables and charts. An expert user such as an infrastructure manager has different options, for example, based on normal/high/medium emitters, site id and so on, to choose from to view the classification results as shown in Fig. 8.

For instance, data pertaining to medium-high emitters at the Rotterdam test site from 2022-02-22 to 2022-02-25 are displayed in a table format for enhanced visualization (see Fig. 9). The table shows the first ten rows, but additional data can be accessed by clicking the 'Next' button. Sorting the table can be done by clicking on the column headers, providing direct insights into the classification of high emitters. Moreover, the table data can be downloaded as a comma-separated values (CSV) file, enabling infrastructure managers to perform further analytics and visualizations. The CSV format facilitates analysis using tools such as Microsoft Excel, MATLAB, and Python.

The dashboard tables offer the infrastructure manager the ability to query specific data using search fields. For example, Fig.10 presents data from the Teesdorf test site, where the infrastructure manager can view information solely on vehicles fueled by diesel. The table in Fig.11 showcases data filtered by site ID and high emitter classification for both noise and exhaust emissions. This table provides a clear overview of high emitters within the Teesdorf test site.

Additionally, real-time vehicle data can be displayed using charts. For this, Chart.js²⁰, a free and open-source JavaScript library, is employed. It offers various chart formats, such as bar charts, line charts, and 3D charts, along with animations. Fig.12 illustrates the initial vehicle test classification trials, comparing $L_{A, max}$ (Y-axis) for normal-medium-high emitters against vehicle speed (X-axis) at the Rotterdam test site. It is important to note that the classification criteria for low, medium, and high emitters can be adjusted based on guidelines set by relevant authorities, such as city councils or transportation and environment ministries. Therefore, Fig.12 serves as an illustrative example of the comparison between $L_{A, max}$ values for different emitter classes and vehicle speed.

The GUI also allows the infrastructure manager to view and analyse the information in the form of different charts, such as pie-chart and doughnut charts. A comparison of different classes of emitters from Rotterdam (query period:2021-10-08 to 2022-08-10) and Teesdorf (query period:2022-04-22 to 2022-07-01) test sites is shown in Fig. 13. From Fig. 13, we can see that out of nearly 315000 vehicles at the Rotterdam test site, 74% vehicles were classified as normal emitters, and 7% and 19% of the vehicles were classified as high and medium emitters, respectively. However, at the Teesdorf test site, out of nearly 250 passby of test vehicles, 58% of them were classified as high emitter vehicles as we intentionally tested the vehicles to be high emitters and tested them for real-time V2X communication from the CDS system. Similarly, a comparison of high-emitter vehicles based on different fuel types can also

²⁰<https://www.chartjs.org/>

TABLE XII: Train sound emission rating classifications

(a) Wagon type and threshold level

Wagon Type	Threshold dB(A) Level
Freight wagon	83
Passenger coach	79
Locomotive	85
Multiple Unit	81

(b) Criteria and ratings

Criteria	Ratings
Measured Level < Threshold Level - 3 dB(A)	Low
Threshold Level - 3 dB(A) < Measured Level \leq Threshold Level	Normal
Threshold Level < Measured Level \leq Threshold Level + 3 dB(A)	Medium
Measured Level > Threshold Level + 3 dB(A)	High

Train Data						
Train Site	LA EQ Value	Train Speed Senso...	Emission Rating	Train Type	Wagon Type	Date & Time
nemo1	78.496895	90.29512	low	freight	freight_wagon	2021-12-13T11:59:...
nemo1	83.449425	90.28919	normal	freight	freight_wagon	2021-12-13T11:59:...
nemo1	80.39721	90.355446	low	freight	freight_wagon	2021-12-13T11:59:...
nemo1	81.427734	90.355446	low	freight	freight_wagon	2021-12-13T11:59:...
nemo1	79.16198	90.28301	low	freight	freight_wagon	2021-12-13T11:59:...
nemo1	80.71253	90.464554	low	freight	freight_wagon	2021-12-13T11:59:...
nemo1	87.33241	90.422	medium	freight	freight_wagon	2021-12-13T11:59:...
nemo1	80.88519	90.36764	low	freight	freight_wagon	2021-12-13T11:59:...
nemo1	80.61827	90.29097	low	freight	freight_wagon	2021-12-13T11:59:...
nemo1	80.39892	90.34396	low	freight	freight_wagon	2021-12-13T11:59:...
Previous		Page	1	of 627	10 rows	Next
Download CSV File						

Fig. 19: Train data results from the NEMO test site

be intuitively visualized in the form of a doughnut chart, as shown in Fig. 14. It can be seen that 55.4% of high emitter vehicles were of petrol type, 37.7% were of diesel type, 6.3% were of a hybrid type and so on. This entire collection of data provides a thorough overview of the classification findings on the NEMO GUI dashboard.

Moreover, the dashboard also gives the option to the infrastructure manager to sort the data of high emitters based on different types of vehicle models. A comparison of high-emitter vehicles based on different vehicle models for the Rotterdam test site (query date: 2022-02-22 to 2022-02-25) is shown in Fig. 15. This type of analytics can be further improved or modified as desired. For instance, in the LIFE GyS-TRA project, a methodology to define high-emitting vehicle models has been proposed. They proposed the “High-Emitter Tendency”, a ratio that calculates how many times a vehicle model is a high-emitter divided by the share of that vehicle model in the analysed fleet. This eliminates the bias that the more a vehicle model is measured, the more high emitters there are. Other similar statistics can also be calculated with this NEMO Analytics dashboard GUI platform, showing it can be scaled and customized for any application or potential customers.

B. Graphic User Interface for Rail Infrastructure

A site for measuring train noise emissions has been built to test the NEMO system, as indicated in Fig. 16, similar to how road infrastructure is set up. The train measurements are also recorded on the Nautilus platform. The NEMO expert user can query the rail data and analyse the information by clicking on the Railway Dashboard as shown in Fig. 7. At the time of writing this paper, sound classifications based on ratings such as high, medium, low, and normal were made available on the Data Hub. Currently, each train wagon’s recorded noise levels are compared to the threshold limit as defined in Table XII to determine its sound emission rating.

In Fig. 19, the train data with different available parameters from the NEMO train site ‘nemo1’ for the query period 2021-12-05 to 2021-12-13 is displayed in the form of a table for analysis in the NEMO dashboard GUI. Similar to NEMO road infrastructure GUI, the train data can also be sorted based on the ‘Emission Rating’, ‘Train Type’, ‘Wagon Type’ and so on, and the respective data can be visualized as shown in Fig. 19. A comparison of $L_{A,EQ}$ values of different classes of emitters against the speed of the train is shown in Fig. 17. It should be noted that most trains with high and medium noise ratings have $L_{A,EQ}$ values exceeding 85 dB(A) and travel at

speeds between 90 and 100 km/h. Similarly, for more intuitive visualization, a 3D pie-chart for comparison of normal, low, medium, and high emission ratings for train vehicles is shown in Fig. 18 where we can observe that 16% of the trains were rated as high emitters while 46% were rated as low emitters according to our NEMO classification model for trains. The train authority, railway ministry, and environmental protection agencies can utilize these details to establish rules relating to the various types of emissions from train vehicles.

In addition to the vehicle dashboard and railway dashboard, the expert user or infrastructure manager also has the option to see different sensors' health information, such as their degraded or healthy state. The expert user or infrastructure manager can also communicate with the vehicle's owner through registered email and mobile messages from the NEMO dashboard, as indicated in Fig. 7.

IX. CONCLUSIONS & FUTURE WORKS

A sustainable transportation future will depend on finding new and intelligent transportation solutions, including effective climate change mitigation. Therefore, it is imperative to constantly monitor train and vehicle exhaust emissions and noise levels. Real-time access to comprehensive measurements of different vehicle noise and emission types remains challenging, impeding accurate analysis and estimation. Therefore, to accurately and affordably identify transgressing noisy and high emitter vehicles (including road vehicles and trains) in near real-time, in this paper, we proposed and outlined the design and implementation of the NEMO system as part of an EU effort.

Our proposed NEMO system is a new autonomous remote sensing technology to accurately and cost-effectively identify and classify transgressing noisy and high emitter vehicles, which enables the NEMO system to identify noise origin in a dense traffic stream and localize high emitters in real-time. We explained the development of the cloud-enabled, highly adaptable Nautilus platform of the NEMO system that collects data from internet sources such as VRDB service, individual road vehicles and trains. The NEMO system has been thoroughly tested for I2I and I2V communication in the field in European cities like Rotterdam and the Austrian village Teesdorf; that uses our AI-based classification algorithms on real-time sensors data for noise and exhaust emissions to evaluate and accurately classify the vehicles and trains as high, medium, and normal emitters. The developed NEMO GUI served as a good visualization platform to analyze classification results of road pass-by vehicles and trains that can help infrastructure managers and stakeholders to develop policies on the high emitters. In addition, real-time communication of classification results from the developed CDS system via different communication channels, such as V2X OBUs, email, SMS and mobile application, serve to communicate the classification results in real-time. We also describe the creation of an all-encompassing NEMO solution that can be integrated with already-existing intelligent transportation systems. We hope that the NEMO system will serve as a tool for enforcement against high emitters in Low-Emission Zones and other sensitive regions.

As part of our future work, we plan to explore the application of the NEMO system in analyzing noise and emissions from ships. Innovative machine learning and edge computing enabled-data processing and decision-making solutions at the edge of the network, as well as using future sixth-generation (6G) communication technology further to reduce latency and notification time to the vehicle, are potentially interesting for our future works.

ACKNOWLEDGEMENTS

The authors would like to gratefully acknowledge the support of different partners such as SINTEF Digital Norway, M+P Netherlands, Müller-BBM Germany, Müller-BBM Rail Technologies Germany, OPUS RSE Spain, CARTIF Spain, and Kapsch TrafficCom Austria involved in this project. More information about the NEMO project can be found on <https://nemo-cities.eu/>. The views expressed are those of the authors and do not necessarily reflect the entire project. The European Commission is not liable for any use that may be made of any of the information contained therein.

REFERENCES

- [1] A. Rauniyar, T. Berge, and J. E. Håkegård, "Nemo: Internet of things based real-time noise and emissions monitoring system for smart cities," in *Proceedings of 2022 IEEE 12th Sensor Array and Multichannel Signal Processing Workshop (SAM)*, Trondheim, Norway. IEEE, 2022, pp. 206–210.
- [2] "Environmental noise in europe," 2020. [Online]. Available: <https://op.europa.eu/en/publication-detail/-/publication/ed51a8c9-6d7e-11ea-b735-01aa75ed71a1/language-en>
- [3] L. Tangermann, D. Vienneau, J. Hattendorf, A. Saucy, N. Künzli, B. Schäffer, J. M. Wunderli, and M. Röösli, "The association of road traffic noise with problem behaviour in adolescents: A cohort study," *Environmental research*, vol. 207, p. 112645, 2022.
- [4] "Turn down the noise - softening the impact of excess transport noise," 2009. [Online]. Available: <https://www.eea.europa.eu/articles/turn-down-the-noise-2013-67-million-europeans-endure-high-transport-noise-exposure>
- [5] A. Kumar, H. Kim, and G. P. Hancke, "Environmental monitoring systems: A review," *IEEE Sensors Journal*, vol. 13, no. 4, pp. 1329–1339, 2012.
- [6] R. Thompson, R. B. Smith, Y. B. Karim, C. Shen, K. Drummond, C. Teng, and M. B. Toledano, "Noise pollution and human cognition: An updated systematic review and meta-analysis of recent evidence," *Environment international*, vol. 158, p. 106905, 2022.
- [7] "Inventory of u.s. greenhouse gas emissions and sinks," 2020. [Online]. Available: <https://www.epa.gov/ghgemissions/inventory-us-greenhouse-gas-emissions-and-sinks>
- [8] H. Khreis, "Traffic, air pollution, and health," in *Advances in transportation and health*. Elsevier, 2020, pp. 59–104.
- [9] A. Glazener and H. Khreis, "Transforming our cities: best practices towards clean air and active transportation," *Current environmental health reports*, vol. 6, no. 1, pp. 22–37, 2019.
- [10] M. Smieszek, M. Dobrzanska, and P. Dobrzanski, "Rzeszow as a city taking steps towards developing sustainable public transport," *Sustainability*, vol. 11, no. 2, p. 402, 2019.
- [11] A. Szpak, R. Gawłowski, J. Modrzyńska, P. Modrzyński, and M. Dahl, "European cities: sustainable development and environmental challenges," in *The Role of Cities in International Relations*. Edward Elgar Publishing, 2022, pp. 118–152.
- [12] R. Zhong, R. Xu, A. Sumalee, S. Ou, and Z. Chen, "Pricing environmental externality in traffic networks mixed with fuel vehicles and electric vehicles," *IEEE Transactions on Intelligent Transportation Systems*, vol. 22, no. 9, pp. 5535–5554, 2020.
- [13] J. Buhigas, M. Fleire, and M. Pujadas, "2.11 design of a program for the identification and correction of high emitting vehicles in europe using remote sensing devices," in *Transport and Air Pollution (TAP) Conference*, 2022, p. 107.
- [14] O. Ghaffaripasand, K. Ropkins, F. Pope *et al.*, "New insights into detecting high pollution emitting vehicles using emission

- remote sensing systems,” *SSRN*, 2022. [Online]. Available: <http://dx.doi.org/10.2139/ssrn.4110030>
- [15] B. Peeters and A. Kuijpers, “Classification of noisy vehicles from unsupervised measurements,” in *INTER-NOISE and NOISE-CON Congress and Conference Proceedings*, vol. 265, no. 5. Institute of Noise Control Engineering, 2023, pp. 2175–2184.
 - [16] J. Hartmann, A. Inkpen, and K. Ramaswamy, “An fsqca exploration of multiple paths to ecological innovation adoption in european transportation,” *Journal of World Business*, vol. 57, no. 5, p. 101327, 2022.
 - [17] T. Williamson, B. Marner, and C. Beattie, “Quantifying the impact of low- and zero- emission zones,” <https://cleancitiescampaign.org/research-list/quantifying-the-impact-of-low-and-zero-emission-zones/>, 2022.
 - [18] E. Flanagan, E. Malmqvist, S. Gustafsson, and A. Oudin, “Estimated public health benefits of a low-emission zone in malmö, sweden,” *Environmental Research*, vol. 214, p. 114124, 2022.
 - [19] Y. Bernard, J. Miller, S. Wappelhorst, and C. Braun, “Impacts of the paris low-emission zone and implications for other cities,” *True Real Urban Emiss. Initiat*, pp. 3–17, 2020.
 - [20] Y. Liu, X. Ma, L. Shu, Q. Yang, Y. Zhang, Z. Huo, and Z. Zhou, “Internet of things for noise mapping in smart cities: state of the art and future directions,” *IEEE Network*, vol. 34, no. 4, pp. 112–118, 2020.
 - [21] J. Hu, C. Chen, L. Cai, M. R. Khosravi, Q. Pei, and S. Wan, “Uav-assisted vehicular edge computing for the 6g internet of vehicles: architecture, intelligence, and challenges,” *IEEE Communications Standards Magazine*, vol. 5, no. 2, pp. 12–18, 2021.
 - [22] E. S. Ali, M. B. Hassan, and R. A. Saeed, “Machine learning technologies in internet of vehicles,” in *Intelligent Technologies for Internet of Vehicles*. Springer, 2021, pp. 225–252.
 - [23] J. Wang, K. Zhu, and E. Hossain, “Green internet of vehicles (ioV) in the 6g era: Toward sustainable vehicular communications and networking,” *IEEE Transactions on Green Communications and Networking*, vol. 6, no. 1, pp. 391–423, 2021.
 - [24] C. Gruening, P. Bonnel, M. Clairotte, B. Giechaskiel, V. Valverdre, A. Zardini, and M. Carriero, “Potential of remote sensing devices (rds) to screen vehicle emissions,” *Publications Office of the European Union: Luxembourg*, 2019.
 - [25] Y. Huang, C. K. Lee, Y.-S. Yam, W.-C. Mok, J. L. Zhou, Y. Zhuang, N. C. Surawski, B. Organ, and E. F. Chan, “Rapid detection of high-emitting vehicles by on-road remote sensing technology improves urban air quality,” *Science advances*, vol. 8, no. 5, p. eabl7575, 2022.
 - [26] C. Liberto, G. Valenti, S. Orchi, M. Lelli, M. Nigro, and M. Ferrara, “The impact of electric mobility scenarios in large urban areas: The rome case study,” *IEEE Transactions on Intelligent Transportation Systems*, vol. 19, no. 11, pp. 3540–3549, 2018.
 - [27] J.-H. Tang, B.-C. Lin, J.-S. Hwang, L.-J. Chen, B.-S. Wu, H.-L. Jian, Y.-T. Lee, and T.-C. Chan, “Dynamic modeling for noise mapping in urban areas,” *Environmental Impact Assessment Review*, vol. 97, p. 106864, 2022.
 - [28] R. B. Ranpise and B. N. Tandel, “Urban road traffic noise monitoring, mapping, modelling, and mitigation: A thematic review,” *Noise Mapping*, vol. 9, no. 1, pp. 48–66, 2022.
 - [29] A. Pascale, P. Fernandes, C. Guarnaccia, and M. Coelho, “A study on vehicle noise emission modelling: Correlation with air pollutant emissions, impact of kinematic variables and critical hotspots,” *Science of the Total Environment*, vol. 787, p. 147647, 2021.
 - [30] A. A. Abdellatif, C. F. Chiasserini, F. Malandrino, A. Mohamed, and A. Erbad, “Active learning with noisy labelers for improving classification accuracy of connected vehicles,” *IEEE Transactions on Vehicular Technology*, vol. 70, no. 4, pp. 3059–3070, 2021.
 - [31] G. Graziuso, S. Mancini, J. Quartieri, and C. Guarnaccia, “Evaluation of single vehicle noise emission in different speed conditions,” *Journal of Physics: Conference Series*, vol. 1603, no. 1, p. 012031, 2020.
 - [32] D. Bernfeld, C. Mietlicki, and F. Mietlicki, “Hydre: a noise radar to automatically track down excessively noisy vehicles in real traffic conditions,” in *INTER-NOISE and NOISE-CON Congress and Conference Proceedings*, vol. 265, no. 3. Institute of Noise Control Engineering, 2023, pp. 4959–4966.
 - [33] J. Murovec, J. Prezelj, L. Čurović, and T. Novaković, “Microphone array based automated environmental noise measurement system,” *Applied Acoustics*, vol. 141, pp. 106–114, 2018.
 - [34] N. Kirchhoff, H.-A. Müller-Straße, M. Männel, and M. Ertsey-Bayer, “Advancements in autonomous detection of high noise emitters in road traffic,” in *Proceedings of 51st International Congress and Exposition on Noise Control Engineering (InterNoise)*, Glasgow, UK, 2022.
 - [35] T. Schindele, “Vehicle noise emission legislation-opportunity for innovative exhaust system solutions,” in *INTER-NOISE and NOISE-CON*

Congress and Conference Proceedings, vol. 255, no. 5. Institute of Noise Control Engineering, 2017, pp. 2095–2102.

- [36] A. Debnath, P. K. Singh, and S. Banerjee, “Vehicular traffic noise modelling of urban area—a contouring and artificial neural network based approach,” *Environmental Science and Pollution Research*, vol. 29, no. 26, pp. 39 948–39 972, 2022.



ASHISH RAUNIYAR is currently working as a Research Scientist at SINTEF Digital, Norway. He received his Ph.D. Degree in Computer Science from the University of Oslo, Norway in 2021. He was a graduate research assistant at the Wireless Emerging Networking System (WENS) Lab, where he completed his Master's degree in IT Convergence Engineering at Kumoh National Institute of Technology, South Korea in 2015. He was a recipient of Best Paper Awards at the 2020 IEEE 43rd International Conference on Telecommunications and Signal Processing (TSP), Milan, Italy; 28th IEEE International Telecommunication Networks and Applications Conference (ITNAC), 2018, Sydney, Australia; and AI-DLDA 2018 International Summer School on Artificial Intelligence, Udine-Italy, 2018. He won the European Satellite Navigation Competition (ESNC) in 2017. He was also selected as “Top 200 Young Researchers in Computer Science & Mathematics” and invited to attend Heidelberg Laureate Forum, Heidelberg, Germany in 2017 and Global Young Scientist Summit, Singapore in 2020. His main research area includes 5G/6G Signal Processing, Autonomous Systems and Networks, Internet of Things, Machine Learning, Wireless Communications, and Computer Networking.



standardization work.

TRULS BERGE is a Research Scientist at SINTEF Digital. He took his civil engineering degree in acoustics at NTNU in 1977 and his M.Sc. in Sound & Vibration at the University of Southampton in 1981. Since 1982, he has been working in the environmental noise group at SINTEF, with road traffic noise as the main research area. He has specialized in noise related to vehicles, tyres and road surfaces and has been a project manager and participant in a wide range of international projects, including



ARD KUIJPERS received his degree in Mechanical Engineering at the Eindhoven University of Technology (NL) in 1994 and his PhD in 1999. He works at M+P since 1999 and is currently a senior consultant and managing director. He is responsible for all R&D activities at M+P. His professional interest lies in the vibro-acoustics of tyre/road and wheel/rail interaction: to understand the processes with the aid of physical and statistical modelling and machine learning and to develop dedicated measurement systems to characterize the sources and parameters that play a role in road and railway traffic noise. Besides working on the fundamentals of rolling noise and vibrations, he is active in designing and developing practical software systems to estimate, monitor, control and mitigate the impact on society of noise and vibration from road and rail transport. He is a strong advocate of a holistic approach to scientific and engineering problems and, as such, has made valued contributions to various technical and legislative working groups and consortia on a national and European level.



PAUL LITZINGER finished his master's studies in Intelligent Transportation Systems from FH Technikum Wien and the University of Linköping in 2011. After a glimpse into test automation, he shifted his attention to Tolling Solutions. He has been employed at Kapsch TrafficCom, Austria, since 2012. He started as a System Engineer managing requirements and specifying interfaces. He later became the Solution Architect of the GNSS-based tolling solutions. Since 2015, he has been a Lead System Engineer, managing

the design and delivery of various national tolling solutions.



JAN ERIK HÅKEGÅRD received the degree Sivilingeniør (M.Sc.) in 1990 from the Department of Electronical Engineering and Informatics, The Norwegian Institute of Technology (NTH), Trondheim, Norway. In 1997 he received a Docteur (Ph.D.) degree in Electronics and Communications at ENST, site de Toulouse, France. Since 1997, he has been with SINTEF Digital, working on research and development projects related to various types of wireless communication systems. He is currently leading

SINTEF activities within the Satellite and Terrestrial Communication Systems.



BERT PEETERS is a senior consultant and researcher at M+P since 2003, working mainly on road, rail and air traffic noise with an additional focus on air quality and sustainability aspects. Bert has a master's degree in applied physics and is skilled in acoustics and engineering, with his largest expertise in road noise abatement at the source: vehicles and tyres. His day-to-day activities cover a wide range, from data science and modelling to legislation and health impacts.

Also, he is experienced in noise policy on a national and international (EU) level. Bert is a member of the Noise Expert Group of the European Commission DG Environment, a member of the Dutch Acoustical Society, and a lecturer on the road, rail and air traffic noise for post-academic students.



Erik van Gils is a senior consultant at M+P Netherlands, an engineering firm that studies and develops noise, vibration and air quality solutions. He received his Bachelor of Applied Science degree from Fontys University of Applied Sciences in 2008. He works on projects that require expertise in both noise and software development. In the NEMO project, he was involved in the development of the DataHub, a system that facilitates the storage, data enrichment, classification and near-real-time querying of the

measurements.



Nikolas Kirchhoff is a Consulting Engineer and System Developer at Müller-BBM Industry Solutions GmbH, Germany. He received his Bachelor's and Master's Degrees in Electrical Engineering and Information Technology from the Technical University of Munich, Germany. His specialization roots in classical signal processing, while his competence expands to acoustic signal processing and psychoacoustics.